

Head Capacity Curve Chart

Size 114 Pumps

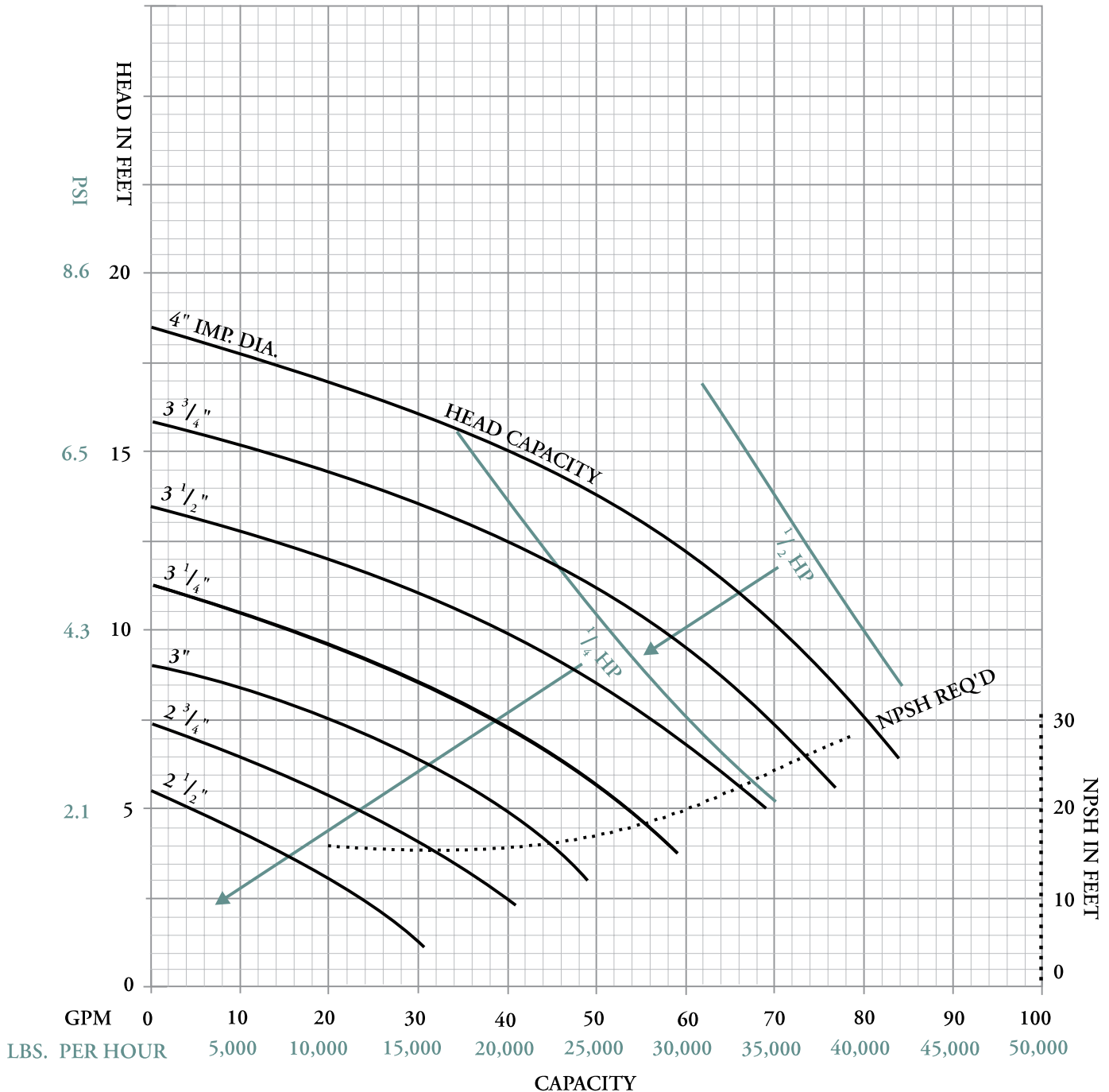
STANDARD INLET PUMP (Volute Type Casing)

For All **Size 114** Pumps, Speed **1750 RPM**
Inlet **1½"** – Outlet **1½"**

omd 800-648-3326
oliver m. dean, inc. www.omdean.com

(See page 9 for instructions on using curve charts).

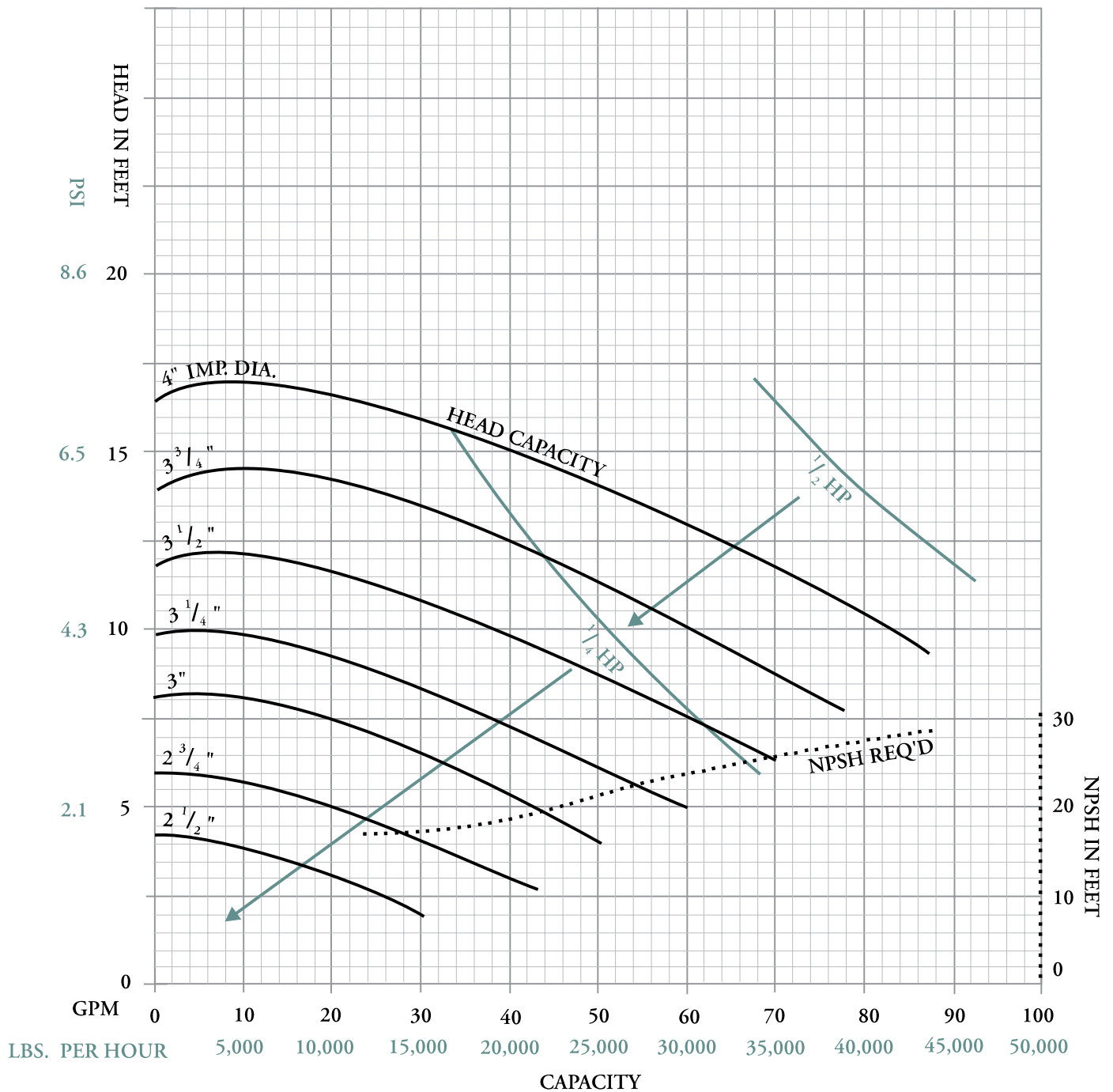
All curves are typical performance curves, not Certified, and should be applied for guideline purposes only.



For vacuum withdrawal applications contact Tri-Clover Inc.

ENLARGED INLET PUMP (Volute Type Casing)

For All **Size 114** Pumps, Speed **1750 RPM**
Inlet 2" – Outlet 1½"



For vacuum withdrawal applications contact Tri-Clover Inc.

Head Capacity Curve Chart

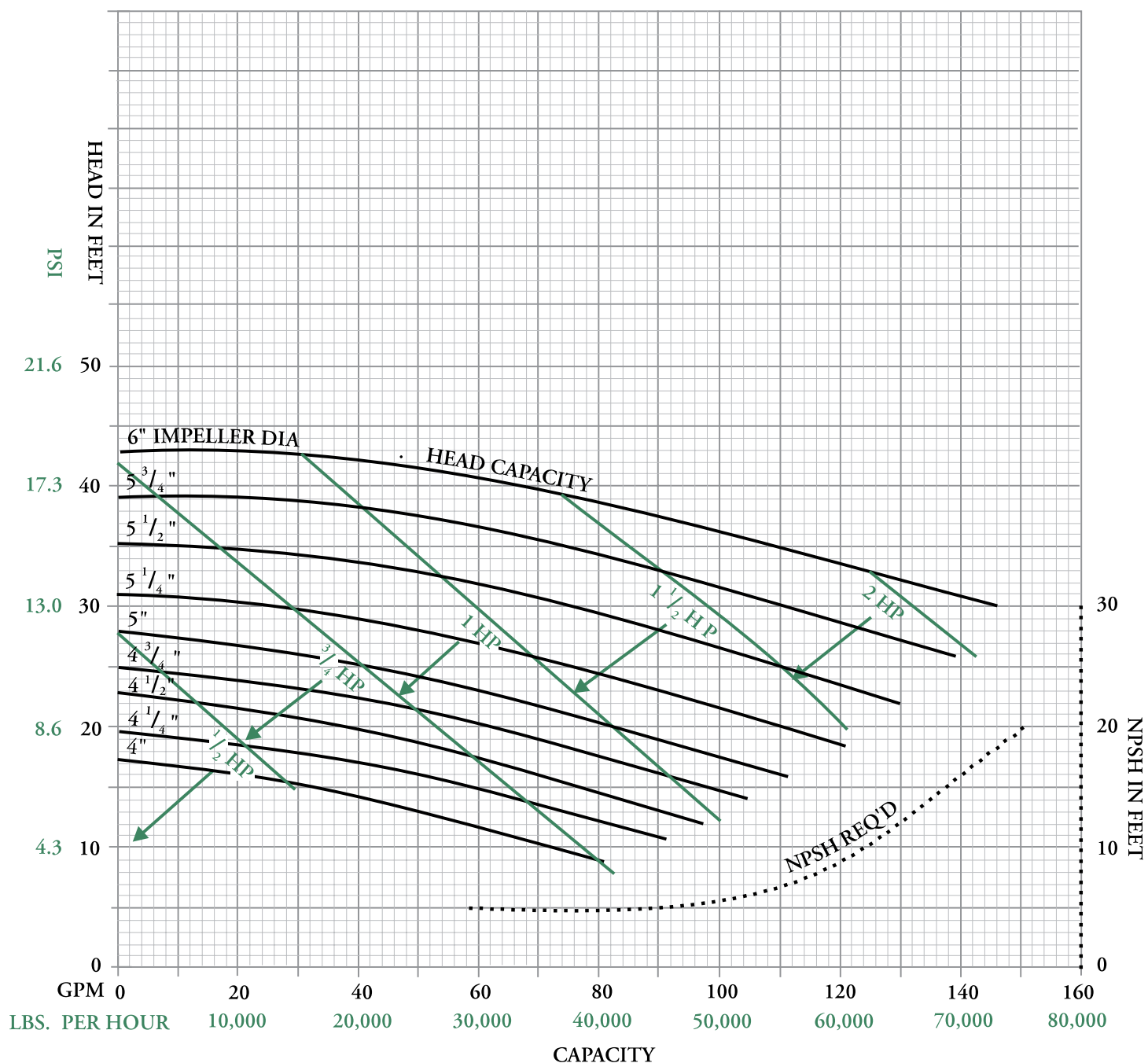
Size 216 Pumps

STANDARD INLET PUMP (Volute Type Casing)

For All Size 216 Pumps, Speed 1750 RPM

Inlet 2" – Outlet 1½"

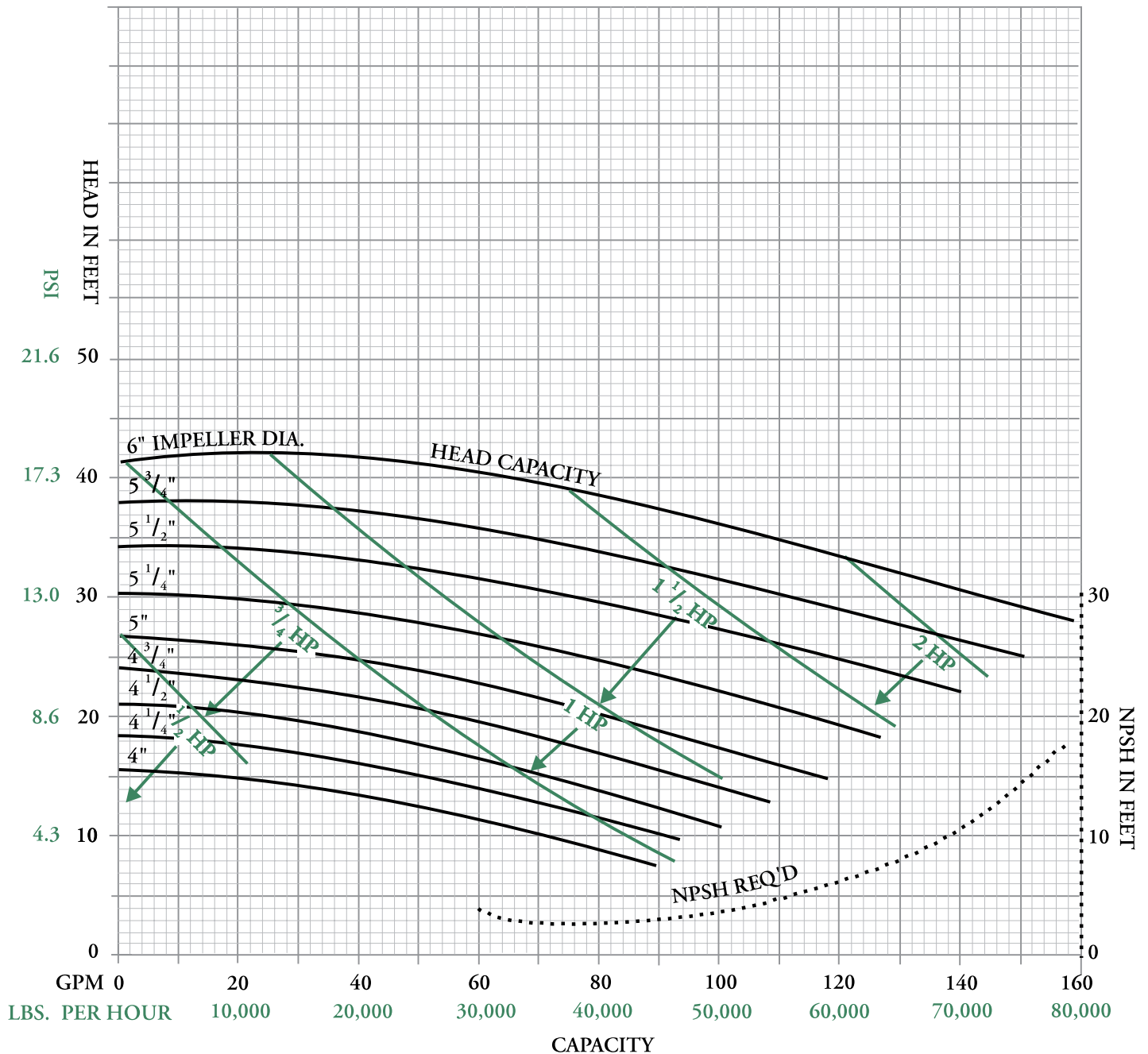
All curves are typical performance curves, not Certified, and should be applied for guideline purposes only.



For vacuum withdrawal applications contact Tri-Clover Inc.

ENLARGED INLET PUMP (Volute Type Casing)

For All Size 216 Pumps, Speed 1750 RPM
Inlet 2½" – Outlet 1½"



For vacuum withdrawal applications contact Tri-Clover Inc.

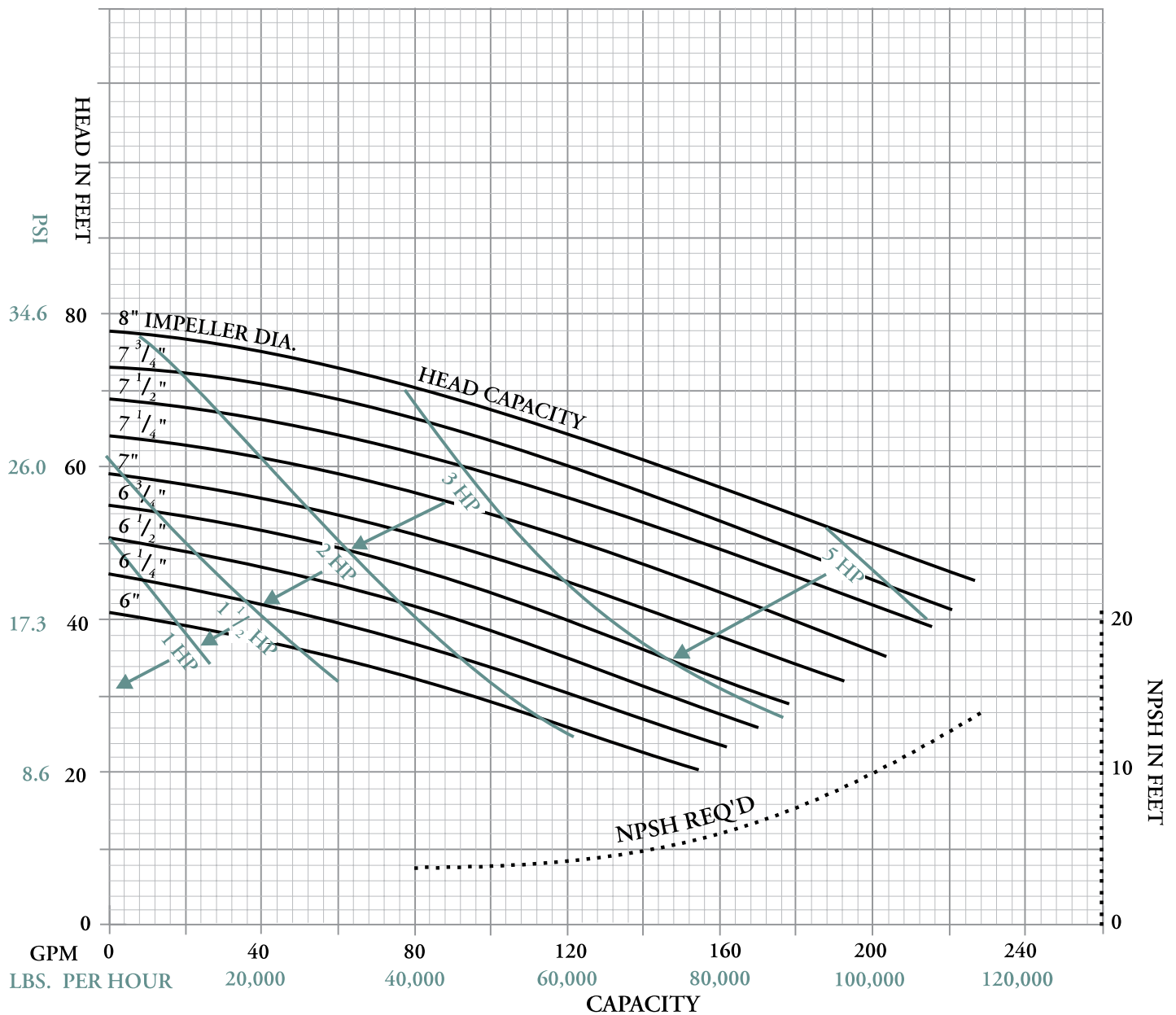
Head Capacity Curve Chart

Size 218 Pumps

STANDARD INLET PUMP (Volute Type Casing)

For All Size 218 Pumps, Speed 1750 RPM
Inlet 2" – Outlet 1½"

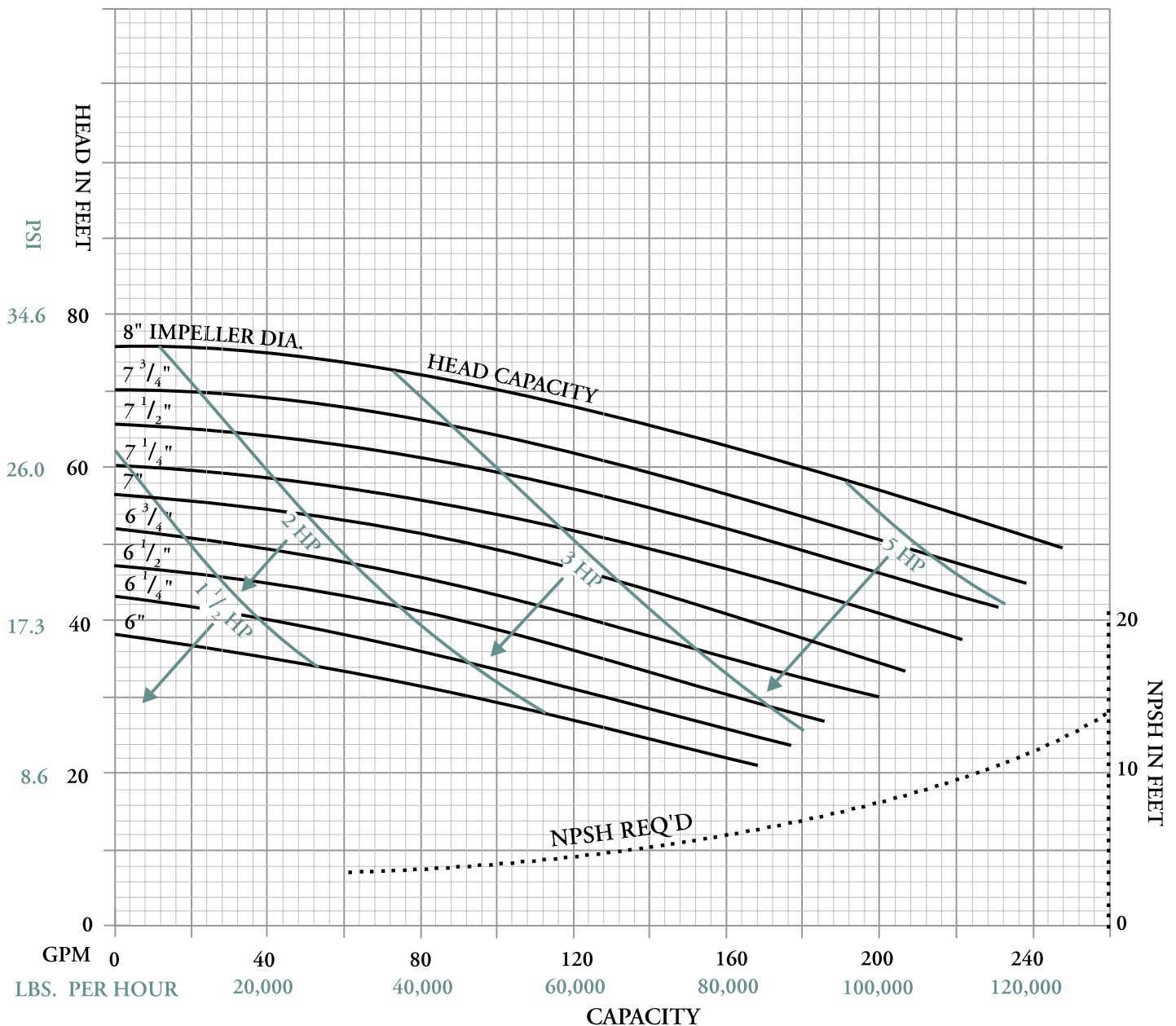
All curves are typical performance curves, not Certified, and should be applied for guideline purposes only.



For vacuum withdrawal applications contact Tri-Clover Inc.

ENLARGED INLET PUMP (Volute Type Casing)

For All **Size 218** Pumps, Speed **1750 RPM**
Inlet 3" – Outlet 1½"



For vacuum withdrawal applications contact Tri-Clover Inc.

Head Capacity Curve Chart

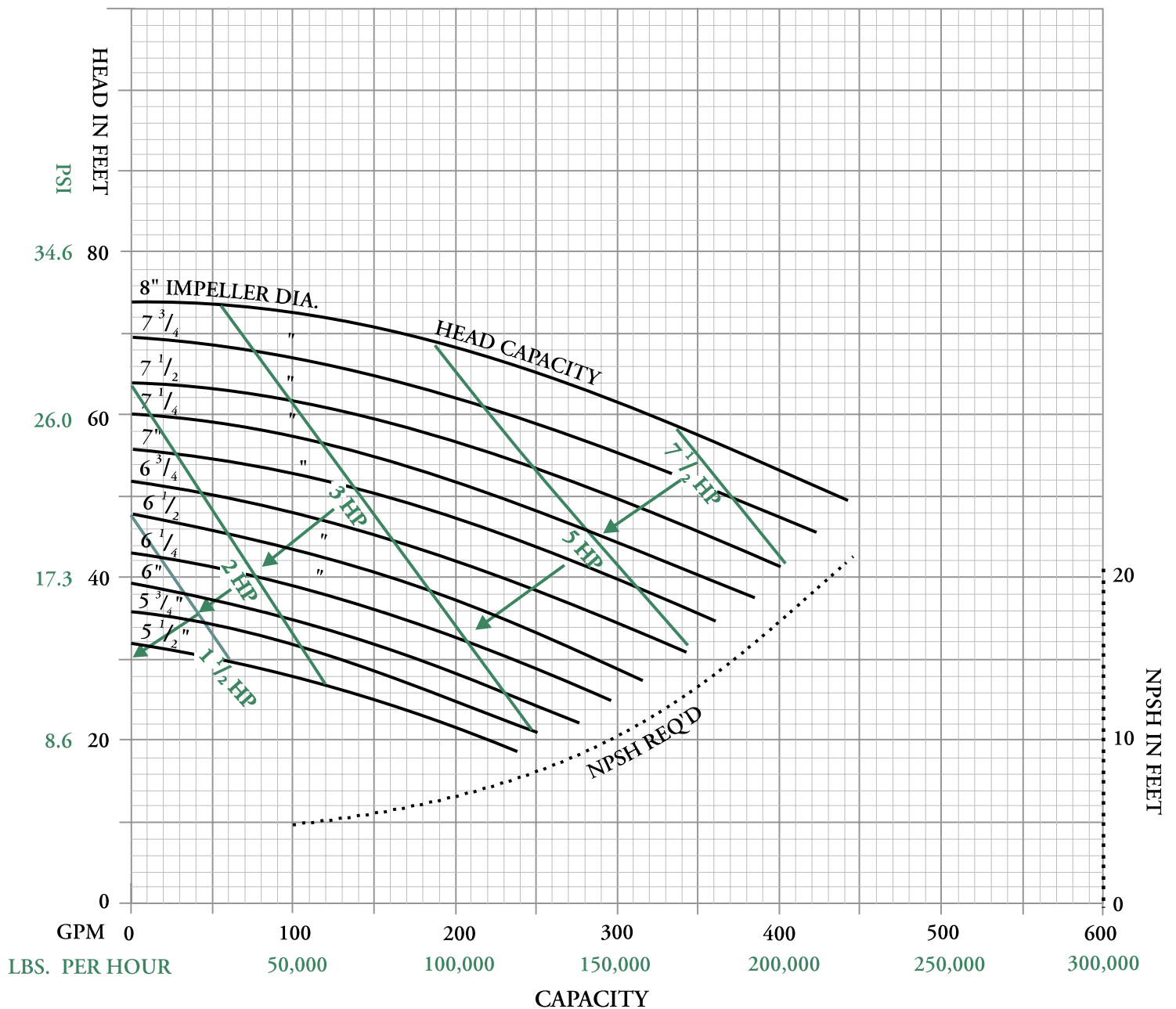
Size 328 Pumps

STANDARD INLET PUMP (Volute Type Casing)

For All **Size 328** Pumps, Speed **1750 RPM**

Inlet 3" – Outlet 2"

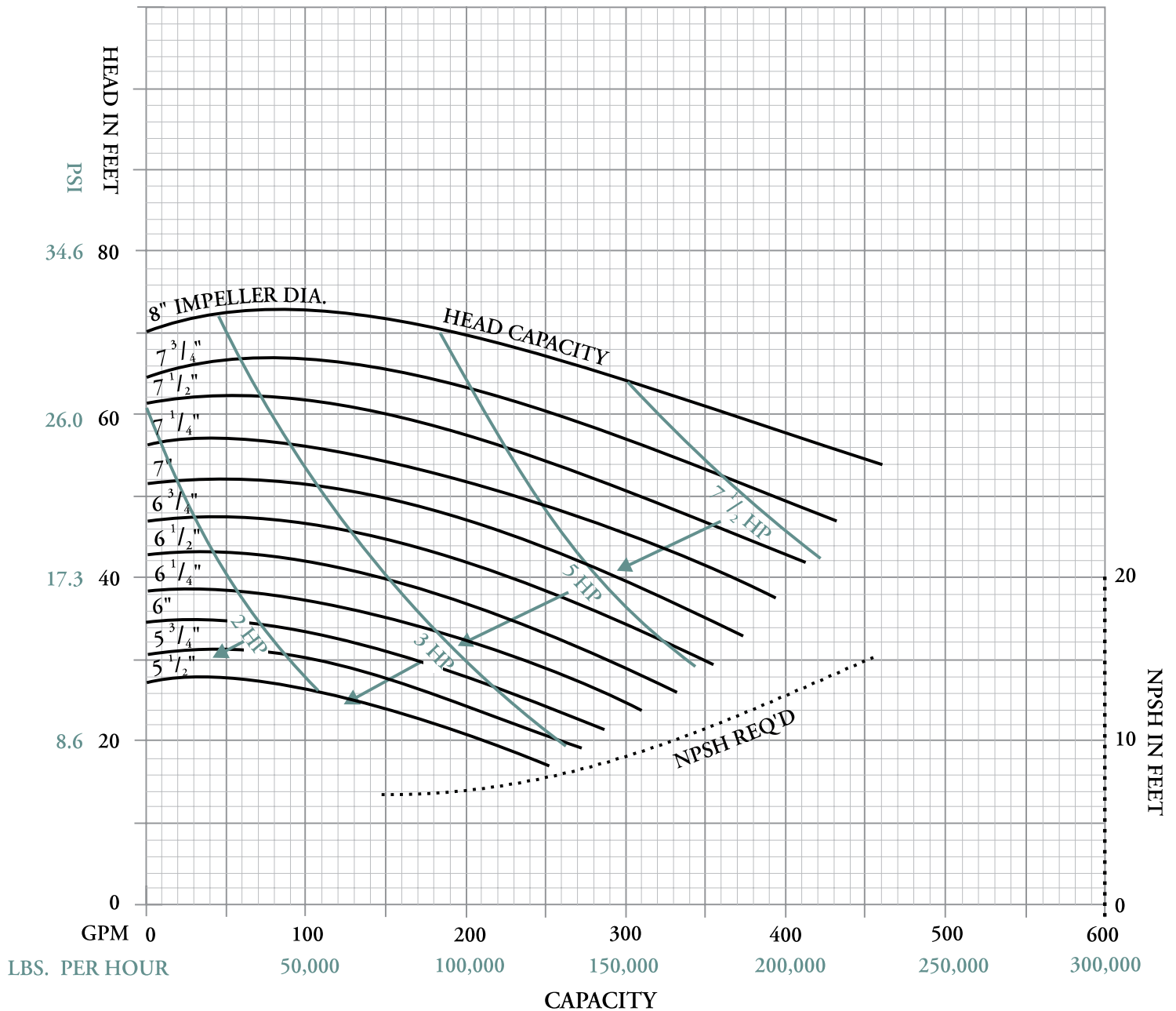
All curves are typical performance curves, not Certified, and should be applied for guideline purposes only.



For vacuum withdrawal applications contact Tri-Clover Inc.

ENLARGED INLET PUMP (Volute Type Casing)

For All **Size 328** Pumps, Speed **1750 RPM**
Inlet 4" – Outlet 2"



For vacuum withdrawal applications contact Tri-Clover Inc.

Head Capacity Curve Chart

Size 4410 Pumps

STANDARD INLET PUMP

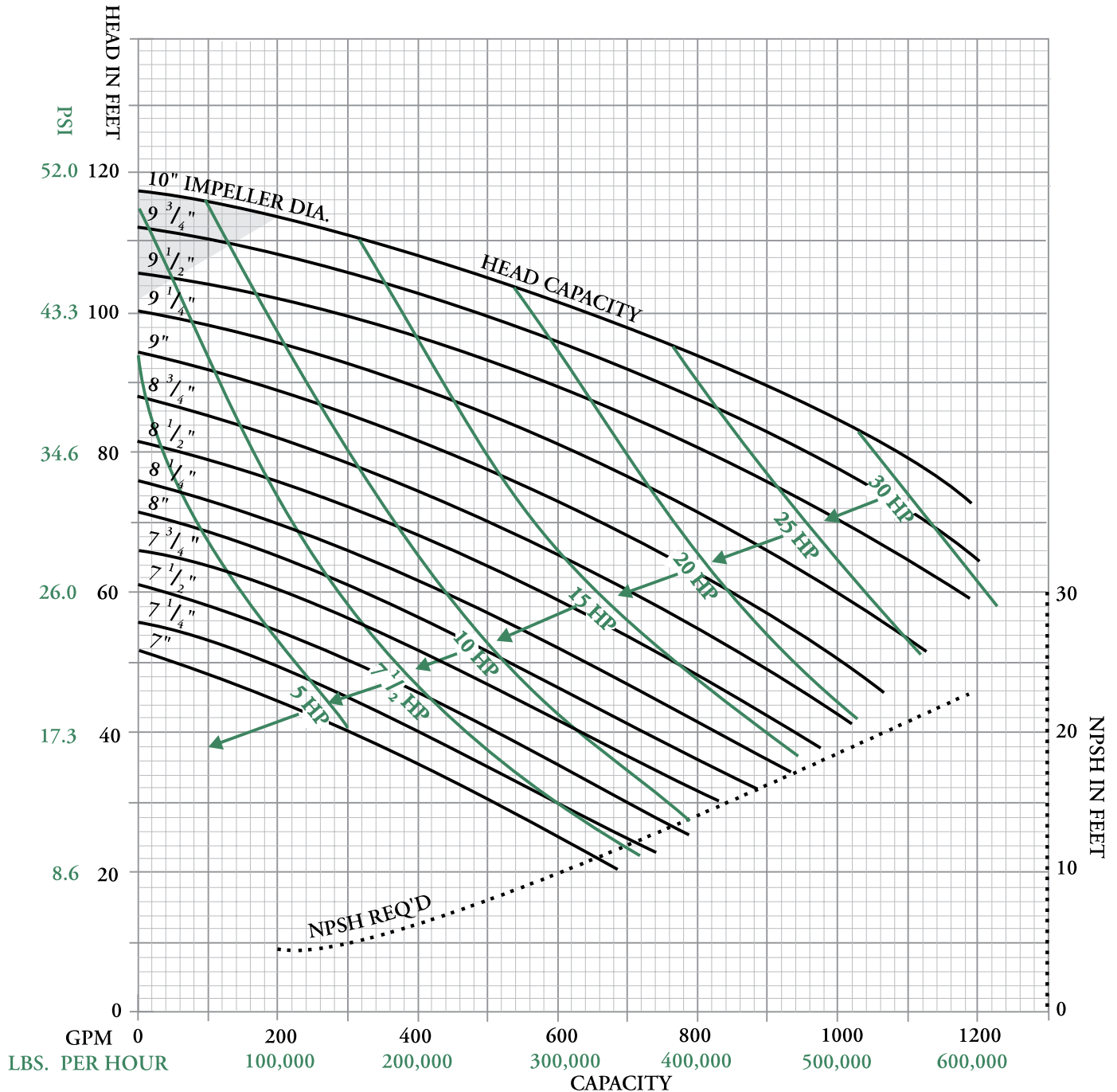
(Volute Type Casing)

For All Size 4410 Pumps, Speed 1750 RPM

Inlet 4" – Outlet 4"

All curves are typical performance curves, not Certified, and should be applied for guideline purposes only.

IMPORTANT: Contact Tri-Clover for guidance if application falls in shaded area.

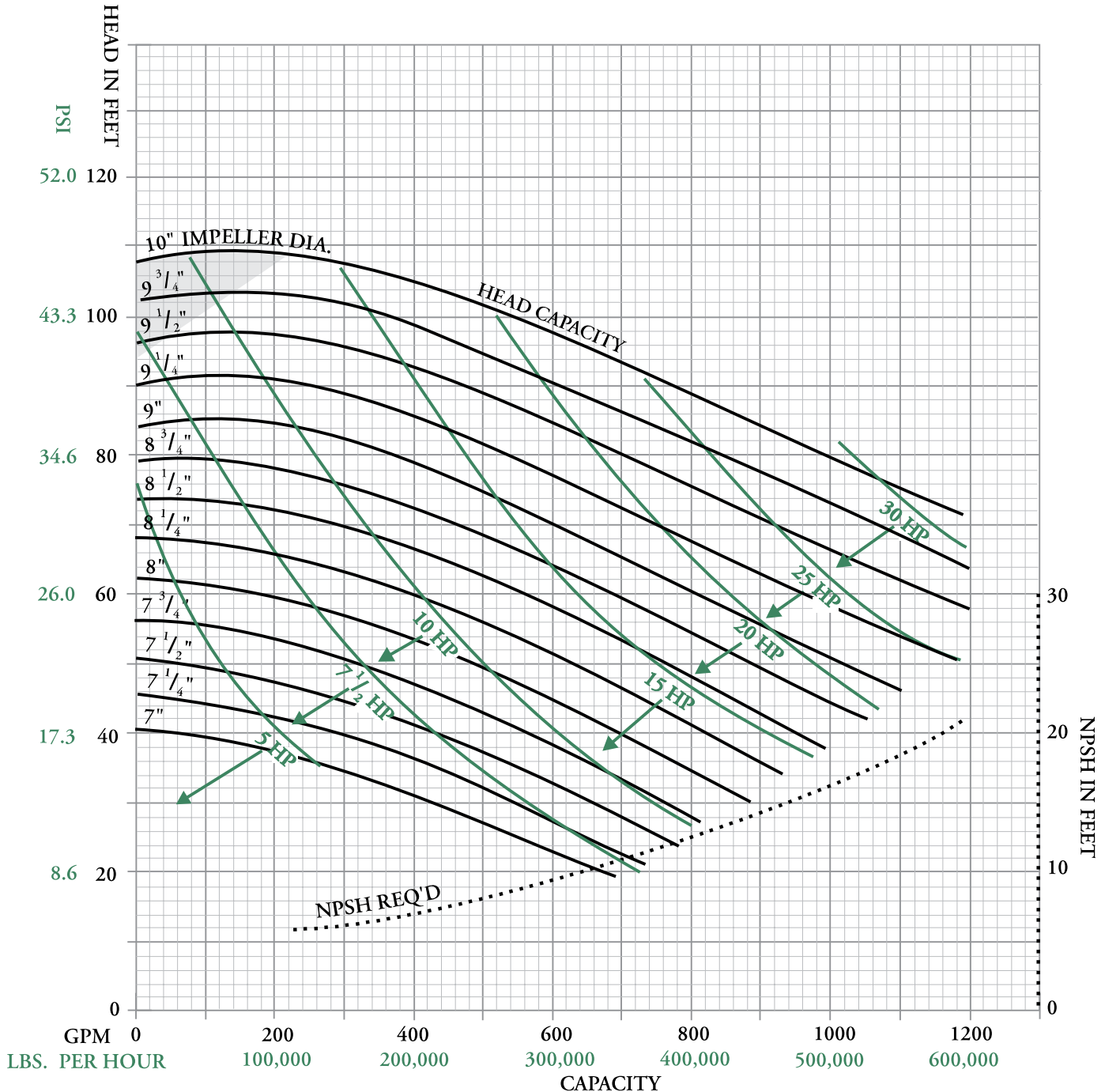


For vacuum withdrawal applications contact Tri-Clover Inc.

ENLARGED INLET PUMP (Volute Type Casing)

For All **Size 4410** Pumps, Speed **1750 RPM**
Inlet 6" – Outlet 4"*

IMPORTANT: Contact Tri-Clover for guidance if application falls in shaded area.



*Pump supplied with 6" x 5" eccentric reducer on inlet (casing inlet is 5"). Information on full 6" inlet available on application
For vacuum withdrawal applications contact Tri-Clover Inc.

Head Capacity Curve Chart

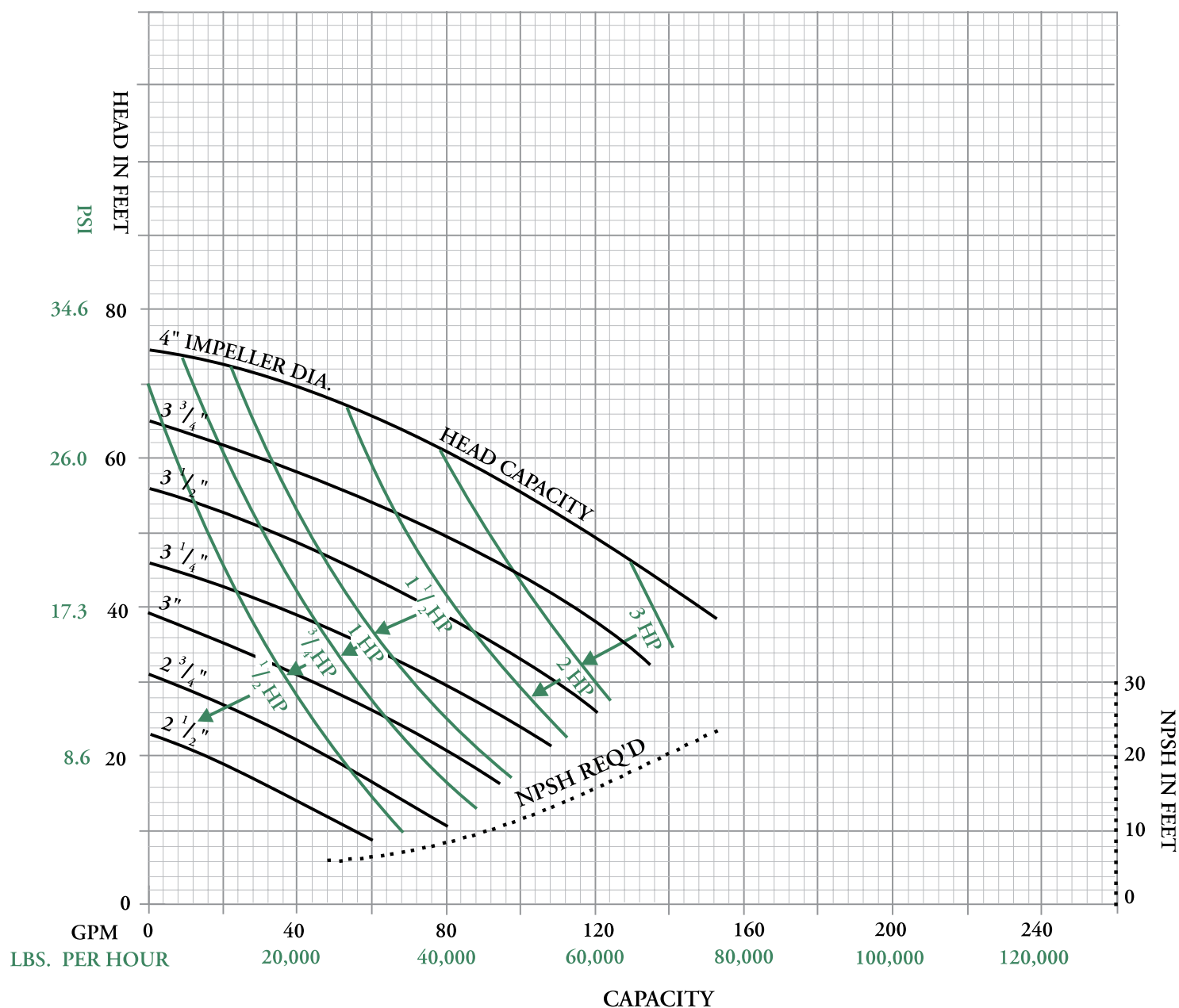
Size 114 Pumps

STANDARD INLET PUMP (Volute Type Casing)

For All **Size 114** Pumps, Speed **3500 RPM**

Inlet 1½" – Outlet 1½"

All curves are typical performance curves, not Certified, and should be applied for guideline purposes only.

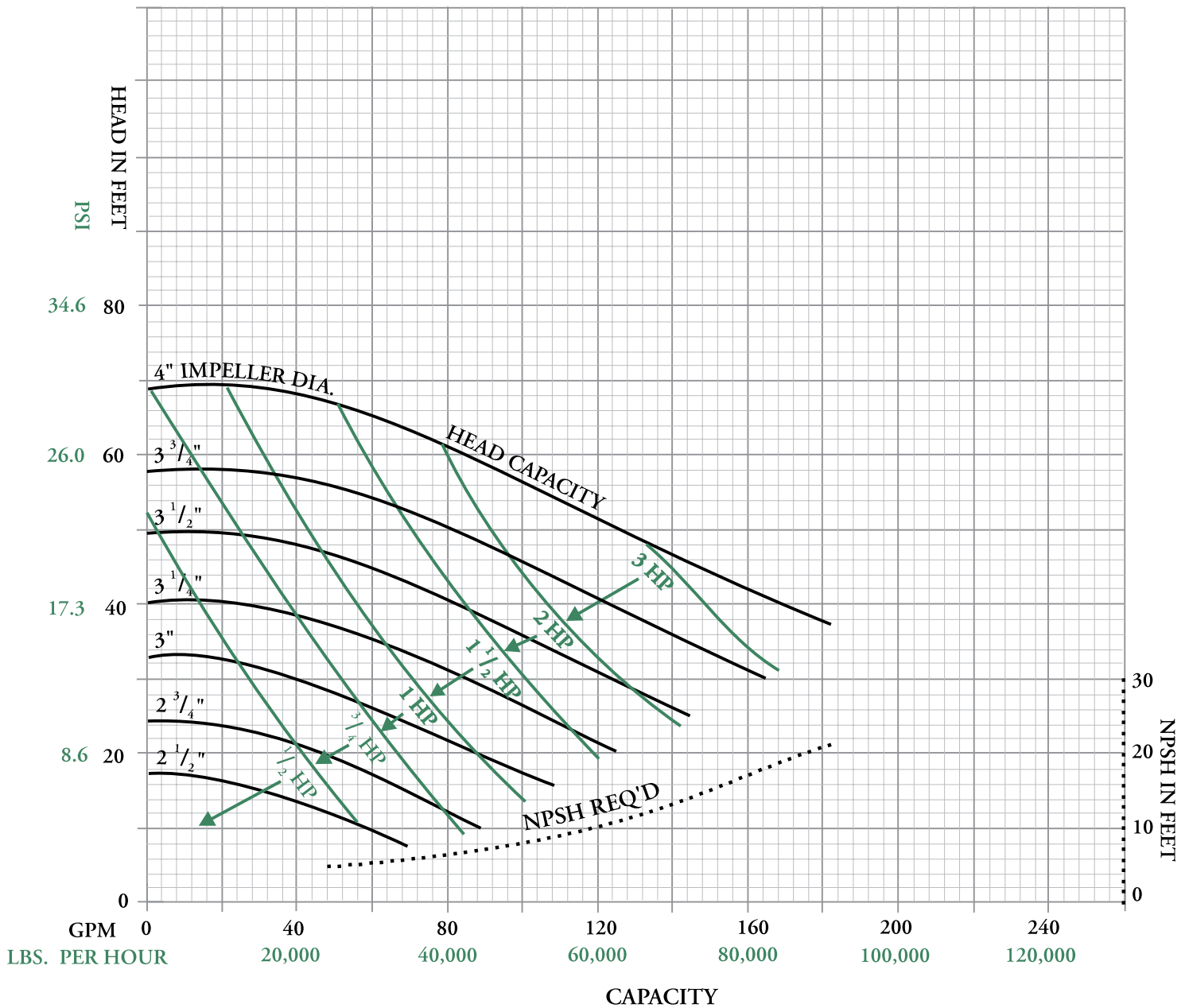


For vacuum withdrawal applications contact Tri-Clover Inc.

ENLARGED INLET PUMP (Volute Type Casing)

For All **Size 114** Pumps, Speed **3500 RPM**

Inlet 2" – Outlet 1½"



For vacuum withdrawal applications contact Tri-Clover Inc.

Head Capacity Curve Chart

Size 216 Pumps

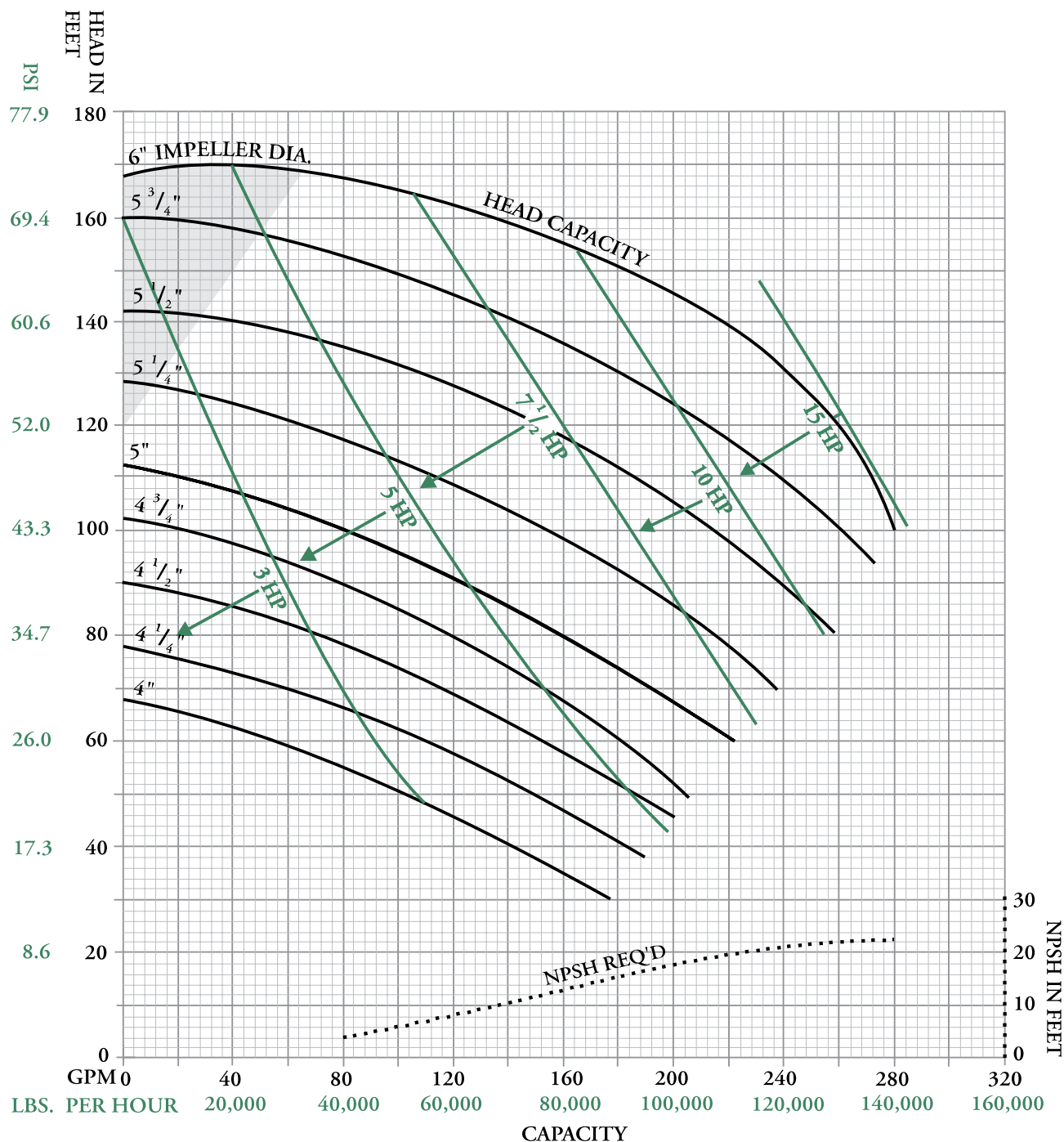
STANDARD INLET PUMP (Volute Type Casing)

For All **Size 216** Pumps, Speed **3500 RPM**

Inlet 2" – Outlet 1½"

All curves are typical performance curves, not Certified, and should be applied for guideline purposes only.

If application falls in shaded area – use only a C-Series Pump.



For vacuum withdrawal applications contact Tri-Clover Inc.

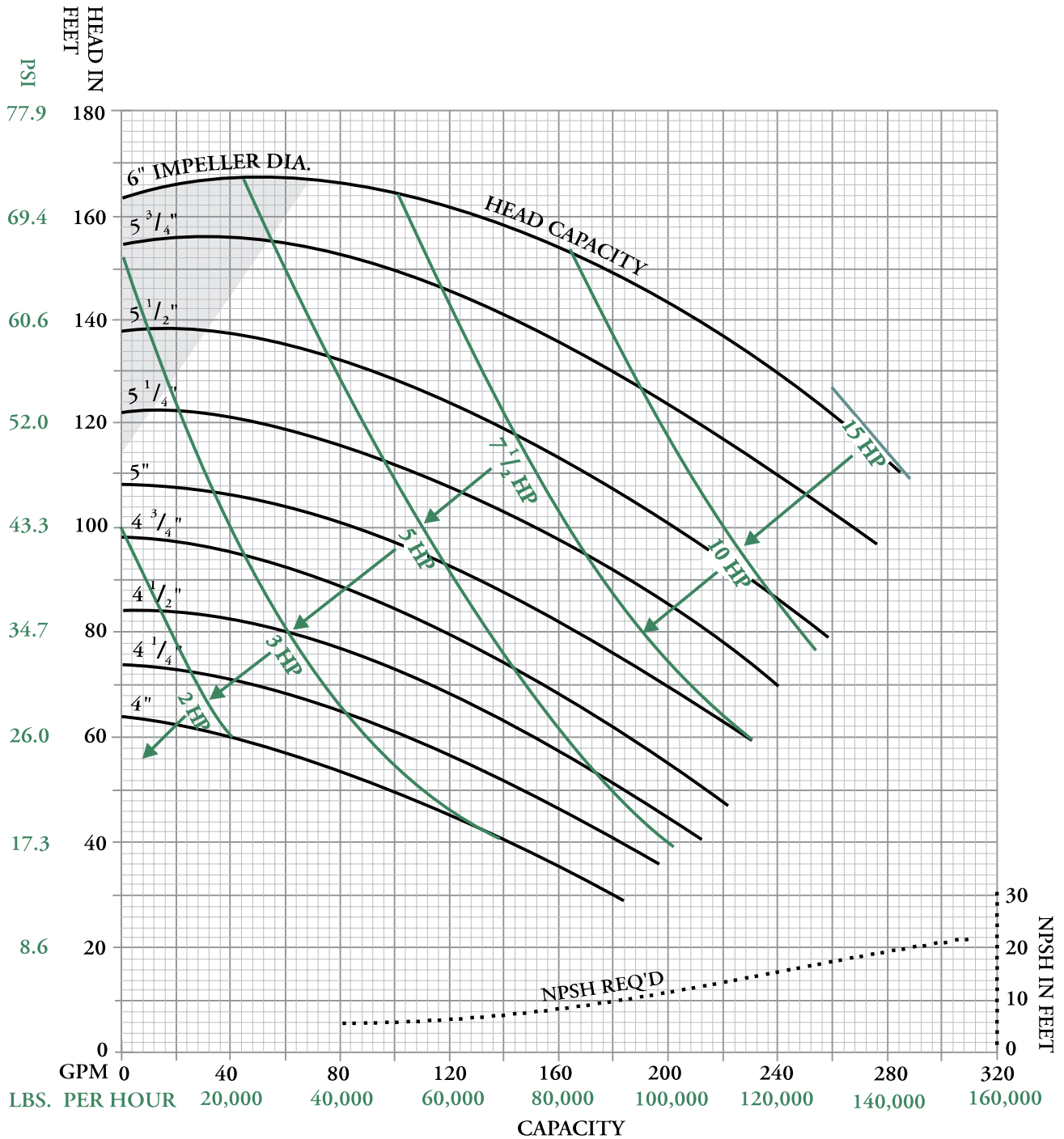
ENLARGED INLET PUMP

(Volute Type Casing)

For All Size 216 Pumps, Speed 3500 RPM

Inlet 2 $\frac{1}{2}$ " – Outlet 1 $\frac{1}{2}$ "

If application falls in shaded area – use only a C-Series Pump.



For vacuum withdrawal applications contact Tri-Clover Inc.

Head Capacity Curve Chart

Size 218 Pumps

STANDARD INLET PUMP

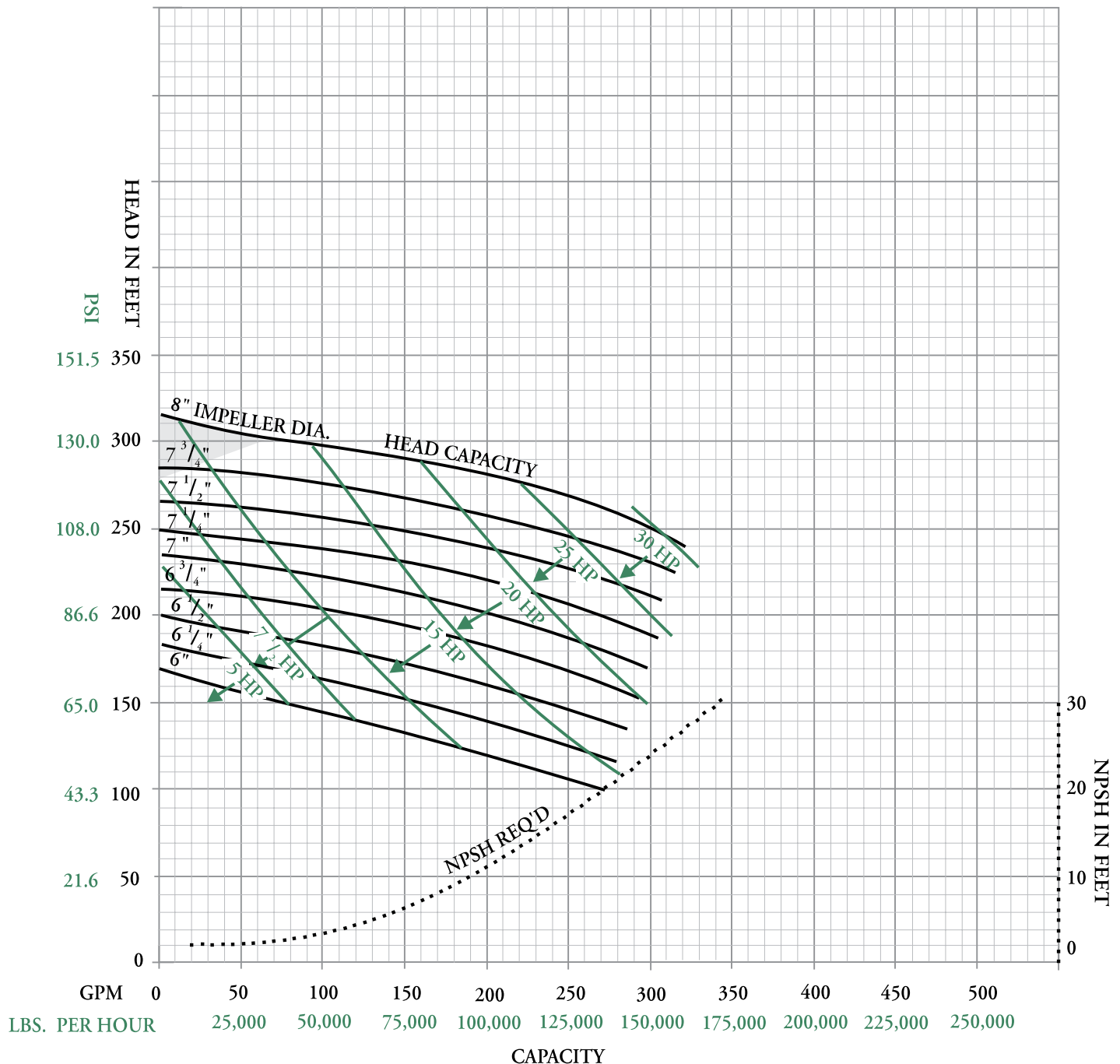
(Volute Type Casing)

For All Size 218 Pumps, Speed 3500 RPM

Inlet 2" – Outlet 1½"

All curves are typical performance curves, not Certified, and should be applied for guideline purposes only.

If application falls in shaded area – use only a C-Series Pump.

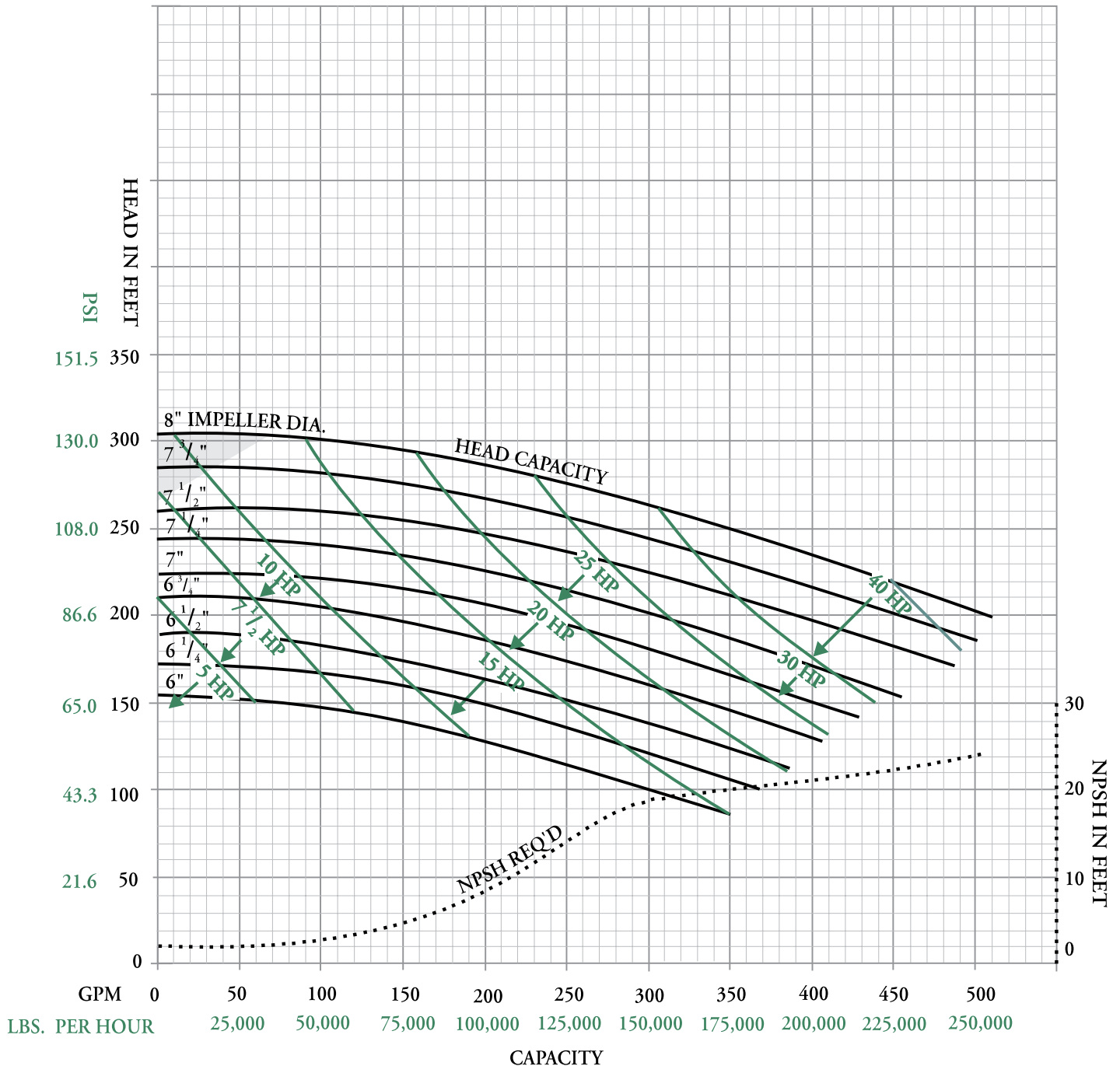


For vacuum withdrawal applications contact Tri-Clover Inc.

ENLARGED INLET PUMP (Volute Type Casing)

For All Size 218 Pumps, Speed 3500 RPM
Inlet 3" – Outlet 1½"

If application falls in shaded area – use only a C-Series Pump.



For vacuum withdrawal applications contact Tri-Clover Inc.

Head Capacity Curve Chart

Size 328 Pumps

STANDARD INLET PUMP

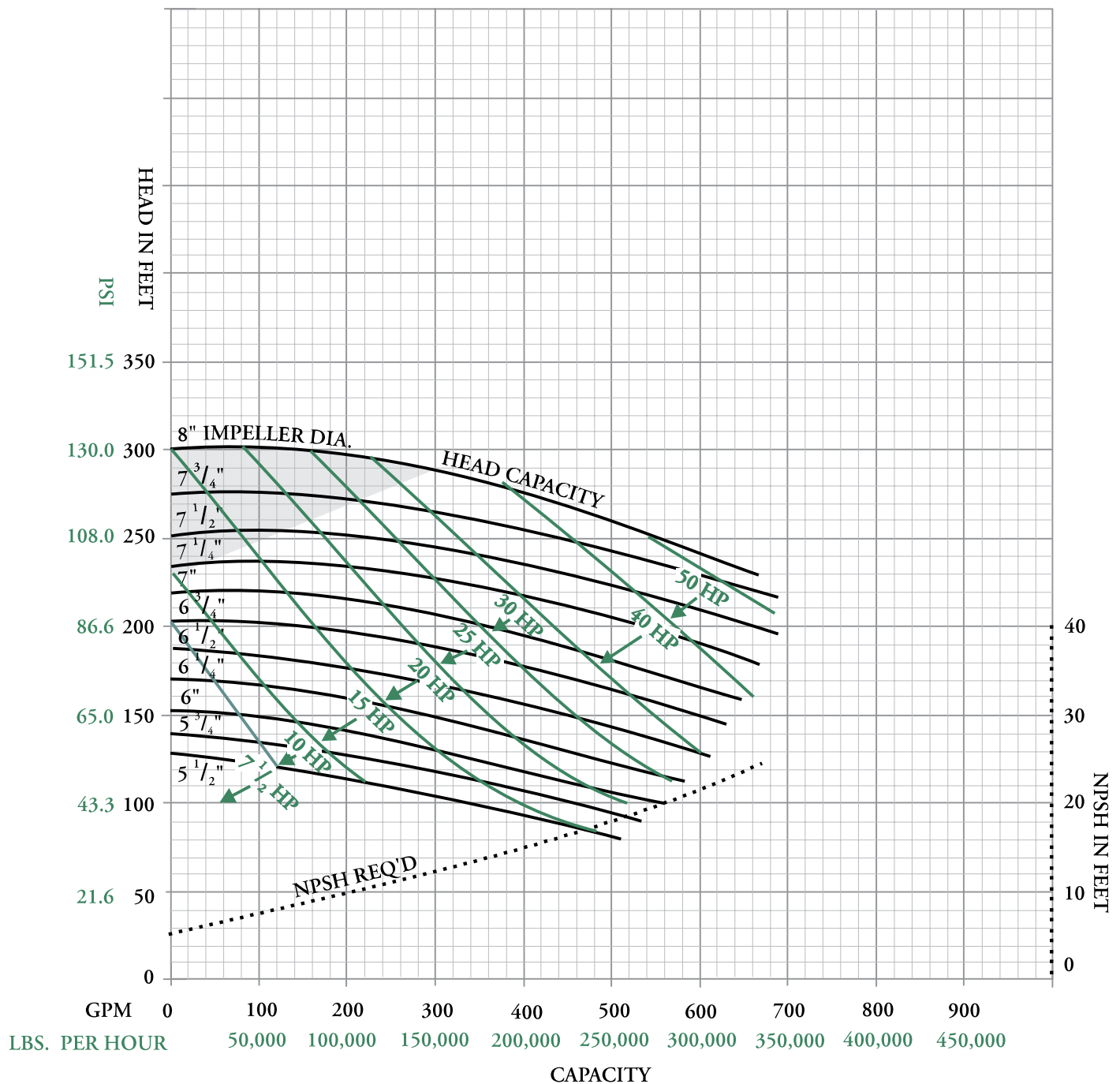
(Volute Type Casing)

For All Size 328 Pumps, Speed 3500 RPM

Inlet 3" – Outlet 2"

All curves are typical performance curves, not Certified, and should be applied for guideline purposes only.

If application falls in shaded area – use only a C-Series Pump.

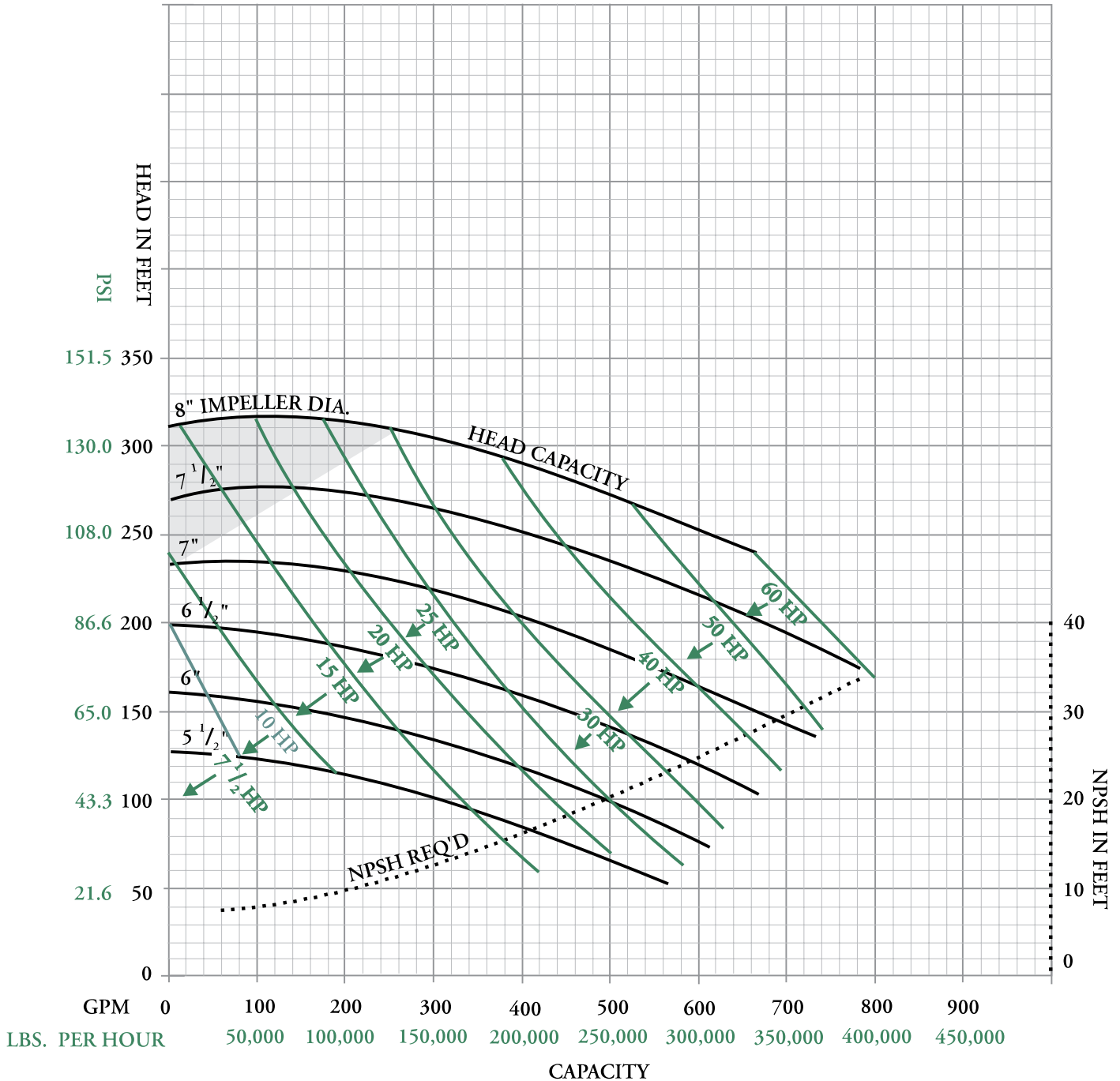


For vacuum withdrawal applications contact Tri-Clover Inc.

ENLARGED INLET PUMP (Volute Type Casing)

For All Size 328 Pumps, Speed 3500 RPM
Inlet 4" – Outlet 2"

If application falls in shaded area – use only a C-Series Pump.



For vacuum withdrawal applications contact Tri-Clover Inc.

Head Capacity Curve Chart

Size 4410 Pumps

STANDARD INLET PUMP

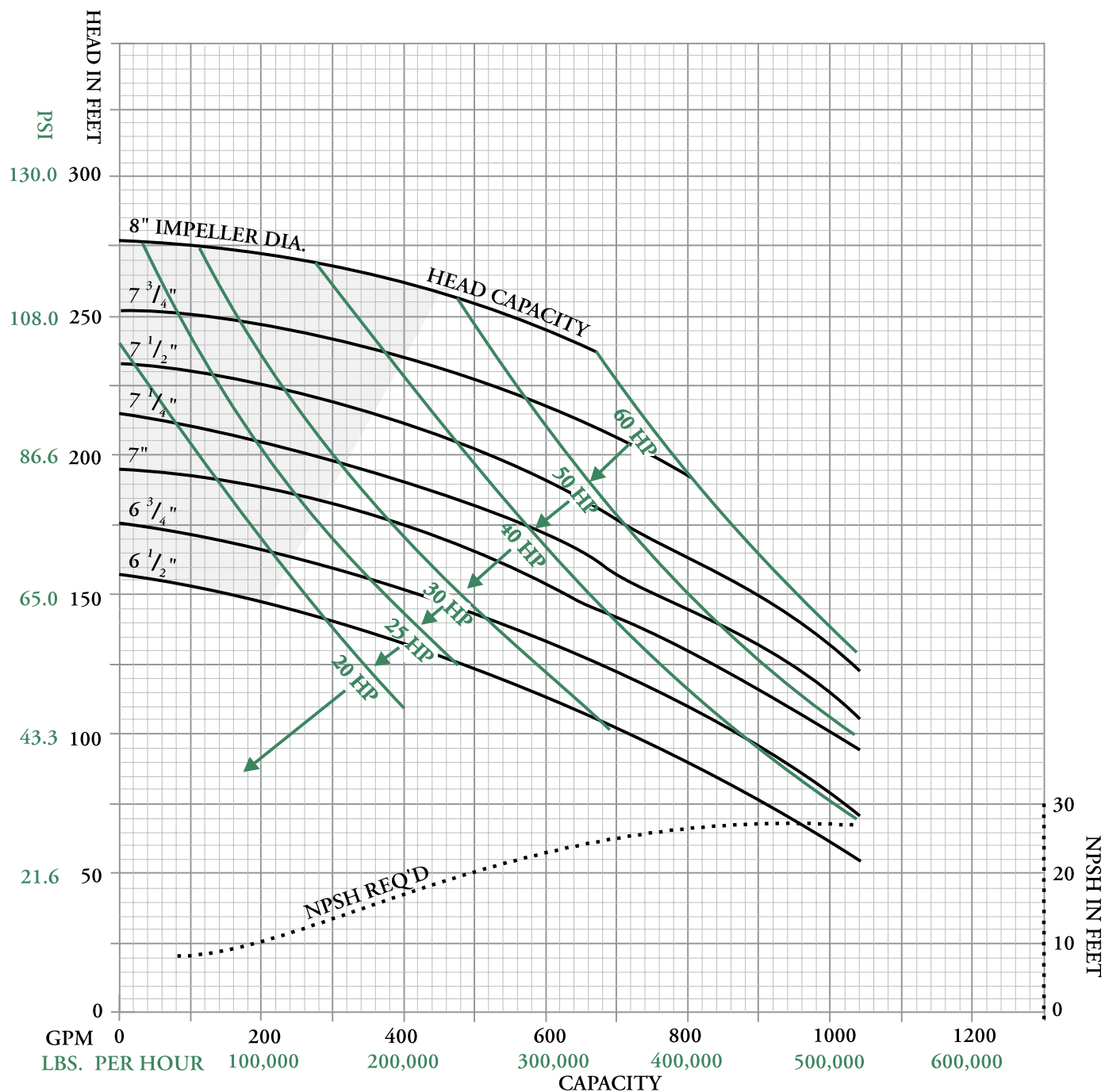
(Volute Type Casing)

For All Size 4410 Pumps, Speed 3500 RPM

Inlet 4" – Outlet 4"

All curves are typical performance curves, not Certified, and should be applied for guideline purposes only.

IMPORTANT: Contact Tri-Clover for guidance if application falls in shaded area.

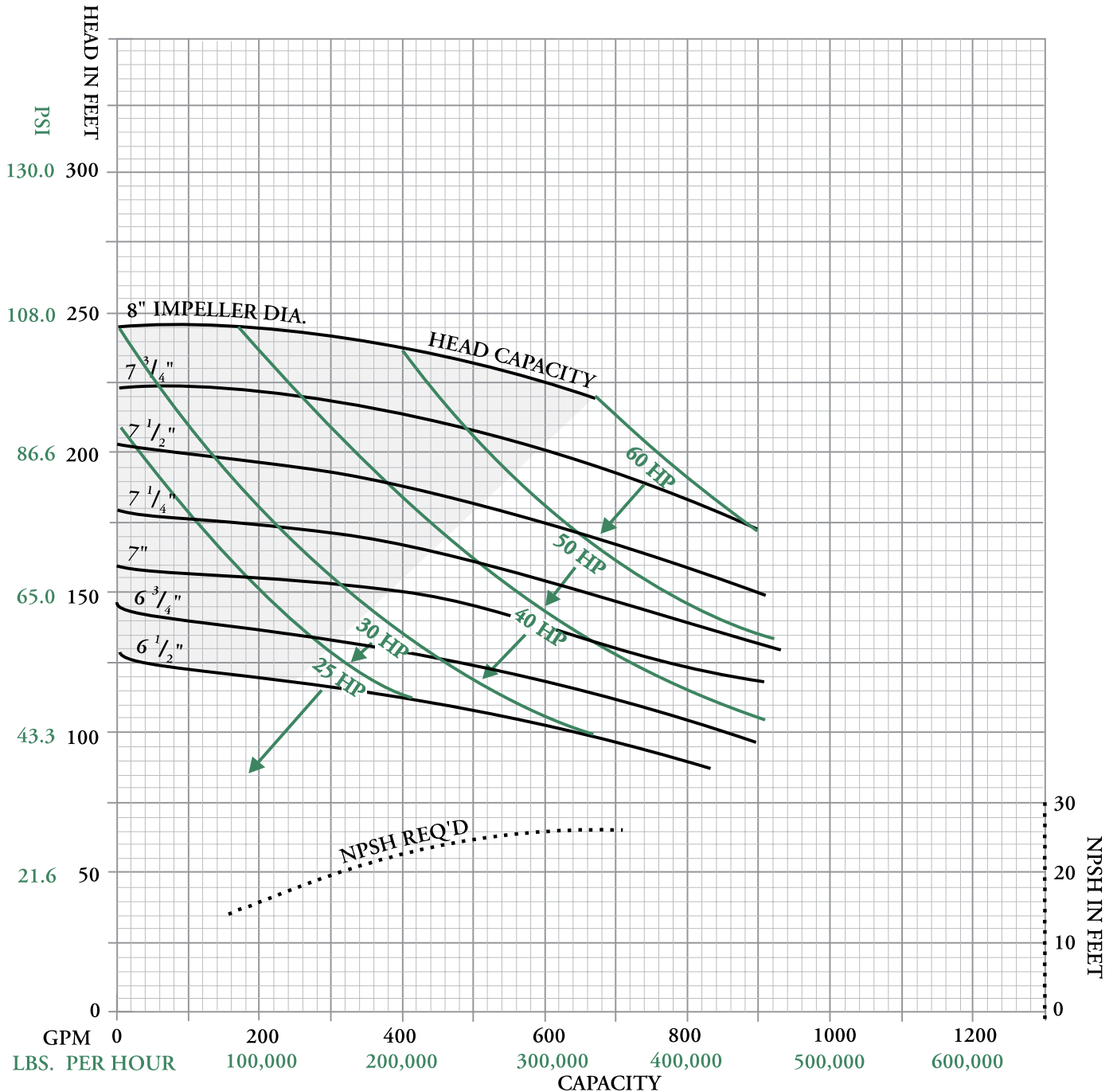


For vacuum withdrawal applications contact Tri-Clover Inc.

ENLARGED INLET PUMP (Volute Type Casing)

For All Size 4410 Pumps, Speed 3500 RPM
Inlet 6" – Outlet 4"*

IMPORTANT: Contact Tri-Clover for guidance if application falls in shaded area.



*Pump supplied with 6" x 5" eccentric reducer on inlet (casing inlet is 5"). Information on full 6" inlet available on application
For vacuum withdrawal applications contact Tri-Clover Inc.