



## Performance Curves

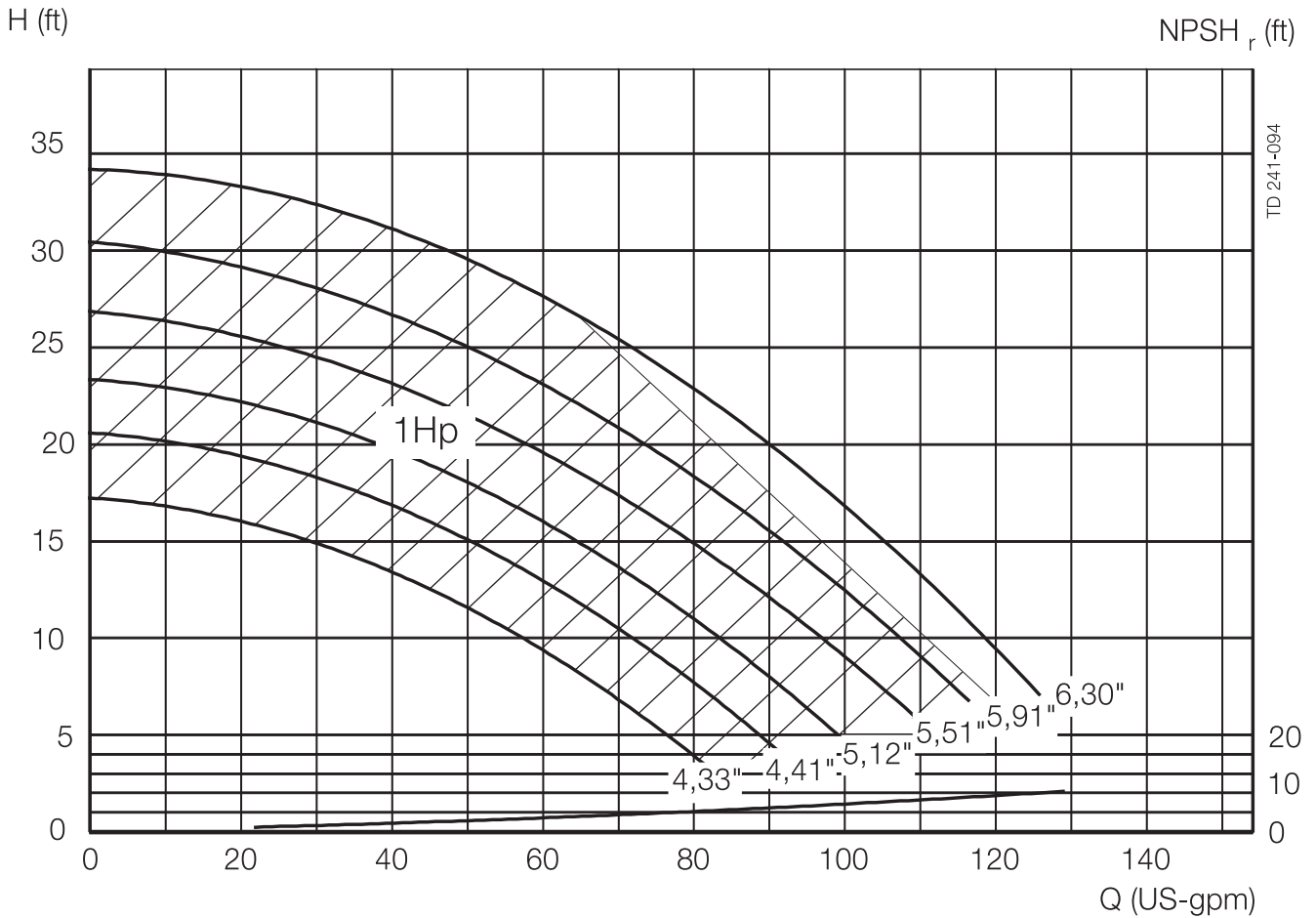
**SolidC-1 Centrifugal Pumps - 60 Hz US**

VM66390 US1 2003-06

Motor: **1800 rpm. synchr.**  
 Tolerance:  $\pm 10\%$   
 Impeller, Max. dia.: 6.30"  
 Impeller, Min. dia.: 4.33"  
 Pump inlet, Dia.: 2"  
 Pump outlet, Dia.: 1½"

Performance data refer to water at 68°F.

NOTE!  
 The curves refer to motor: 2.4 Hp (1.8 kW), 1710 rpm.  
 asynchr., 60 Hz.



TD 241-094



**800-648-3326**  
**www.omdean.com**

## Performance Curves

**SolidC-1 Centrifugal Pumps - 60 Hz US**

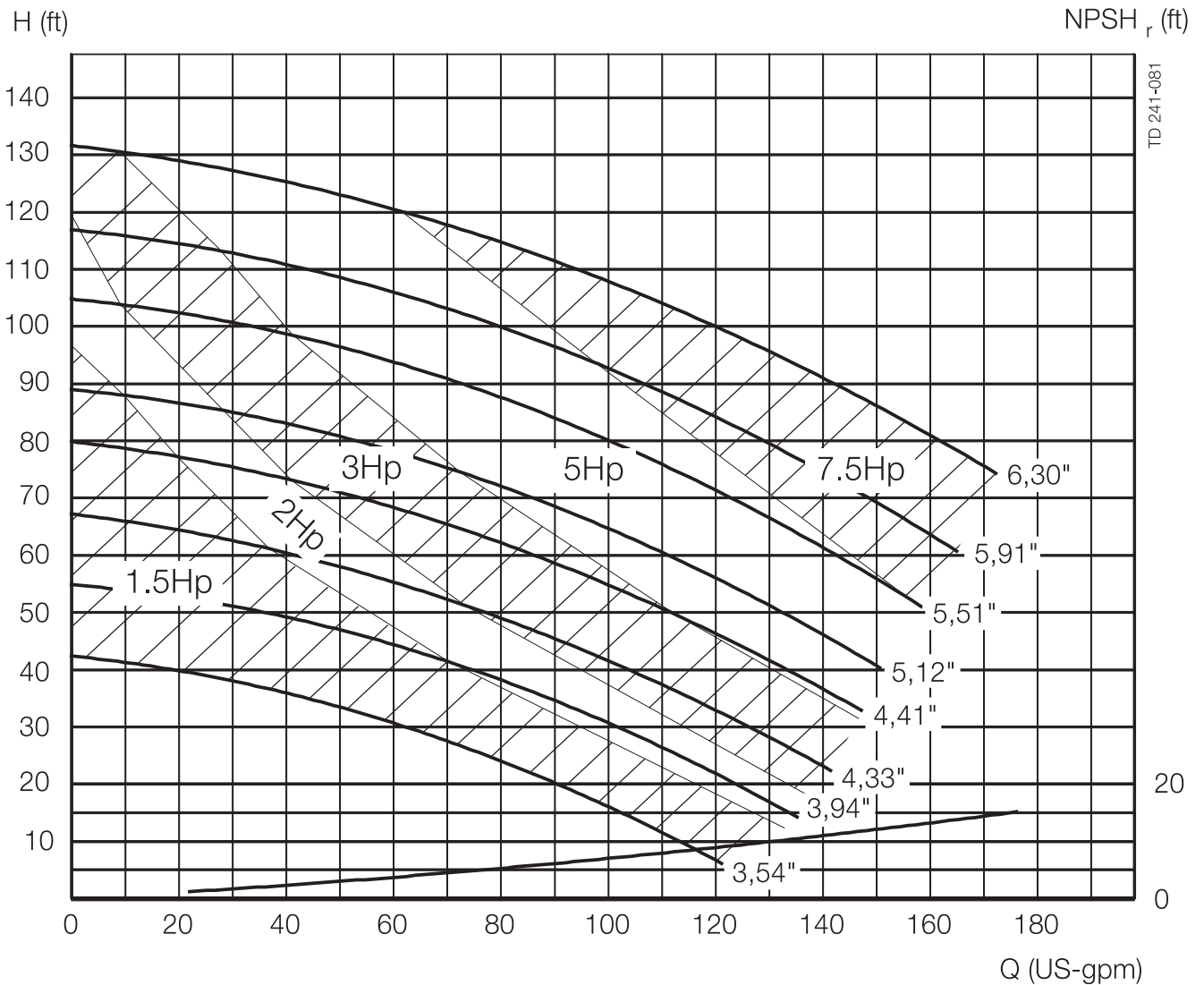
VM66390 US1 2003-06

Motor: **3600 rpm. synchr.**  
 Tolerance:  $\pm 10\%$   
 Impeller, Max. dia.: 6.30"  
 Impeller, Min. dia.: 3.54"  
 Pump inlet, Dia.: 2"  
 Pump outlet, Dia.: 1½"

Performance data refer to water at 68°F.

**NOTE!**

The curves refer to motor: 8.85 Hp (6.6 kW), 3540 rpm. asynchr., 60 Hz.





800-648-3326  
www.omdean.com

## Performance Curves

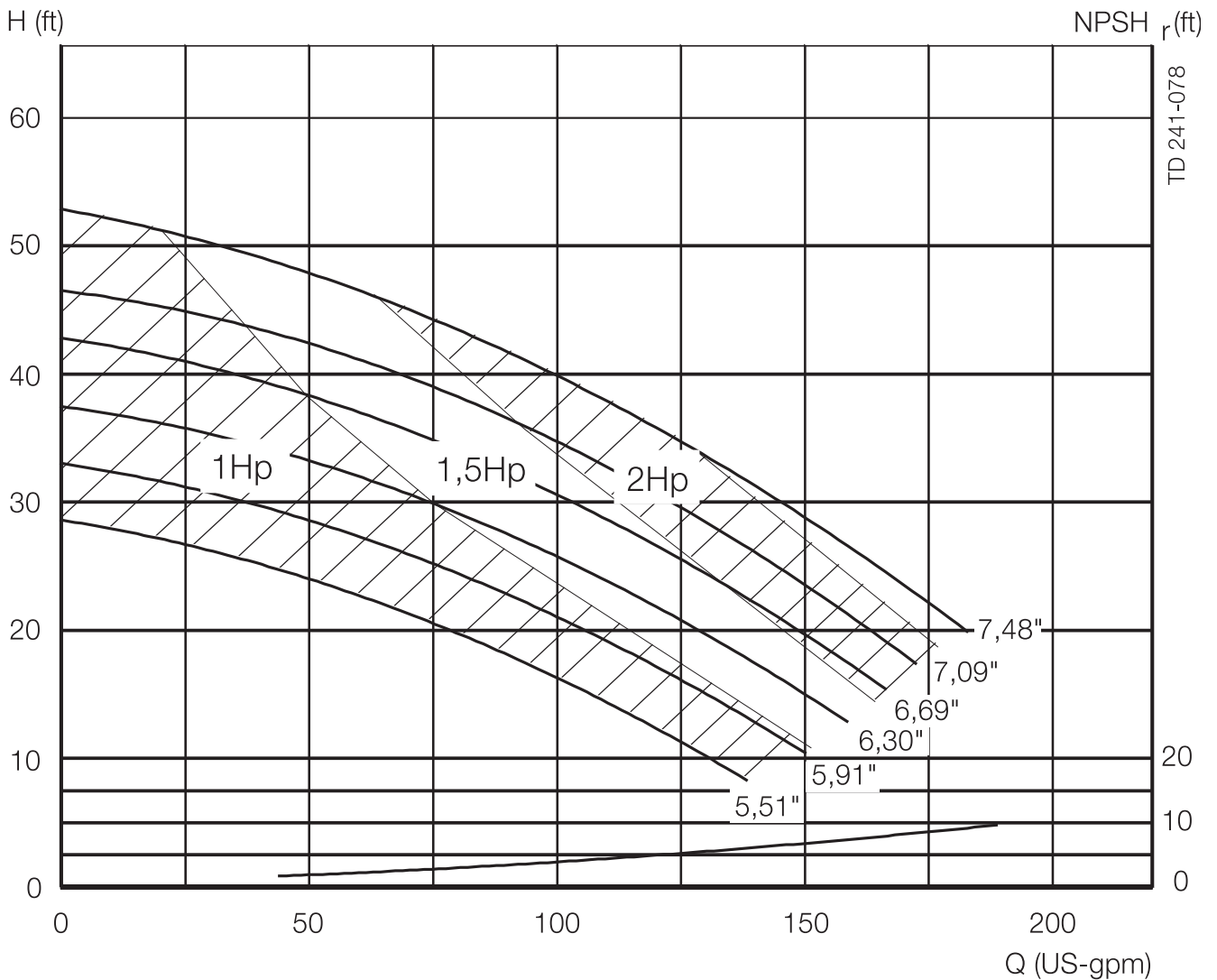
SolidC-2 Centrifugal Pumps - 60 Hz US

VM66390 US1 2003-06

Motor: **1800 rpm. synchr.**  
Tolerance:  $\pm 10\%$   
Impeller, Max. dia.: 7.48"  
Impeller, Min. dia.: 5.51"  
Pump inlet, Dia.: 2½"  
Pump outlet, Dia.: 1½"

Performance data refer to water at 68°F.

NOTE! The curves refer to motor: 3.6 Hp (2.7 kW), 1710 rpm. asynchr., 60 Hz.





## Performance Curves

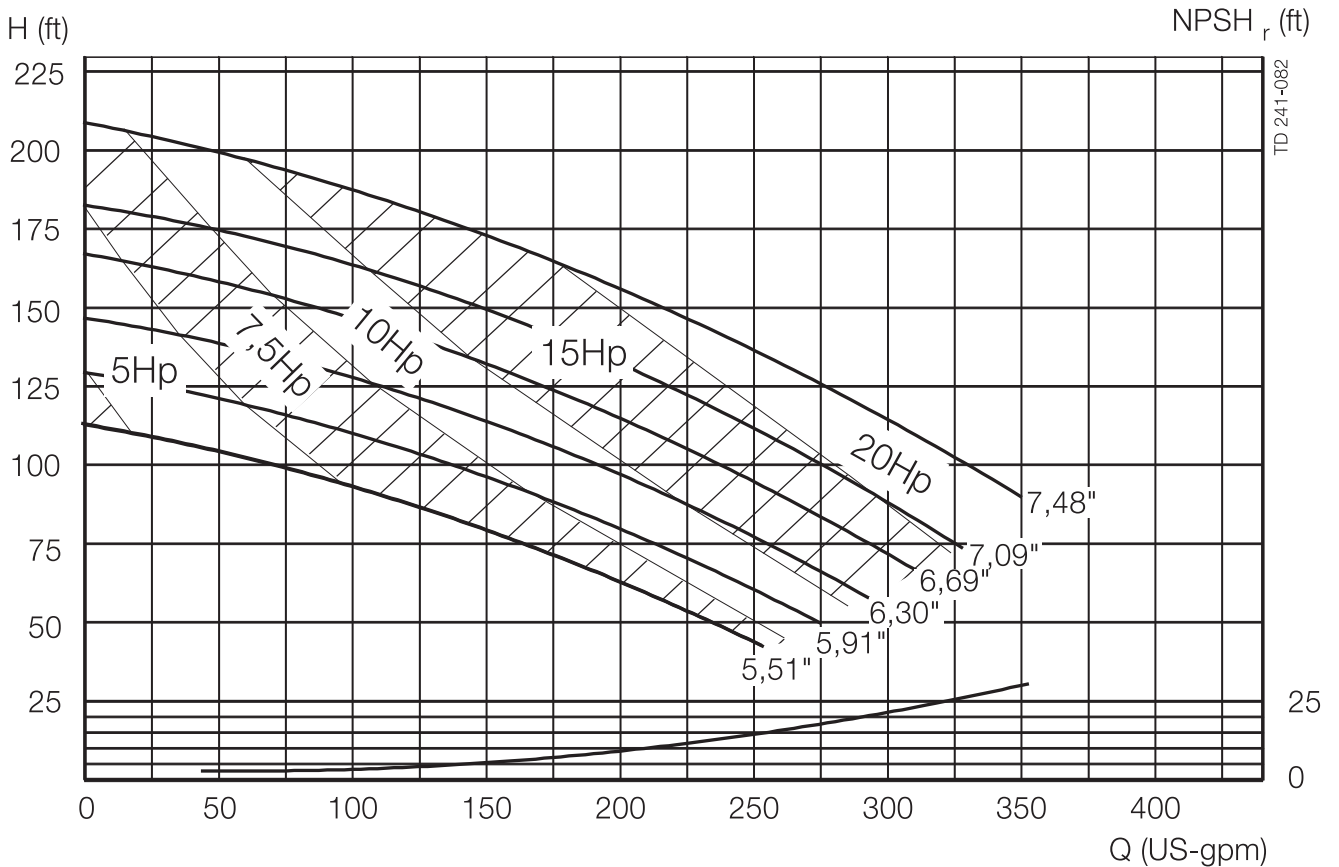
**SolidC-2 Centrifugal Pumps - 60 Hz US**

VM66390 US1 2003-06

Motor: **3600 rpm. synchr.**  
 Tolerance:  $\pm 10\%$   
 Impeller, Max. dia.: 7.48"  
 Impeller, Min. dia.: 5.51"  
 Pump inlet, Dia.: 2½"  
 Pump outlet, Dia.: 1½"

Performance data refer to water at 68°F.

NOTE! The curves refer to motor: 22.8 Hp (18 kW), 3535 rpm. asynchr., 60 Hz.





**Performance Curves**

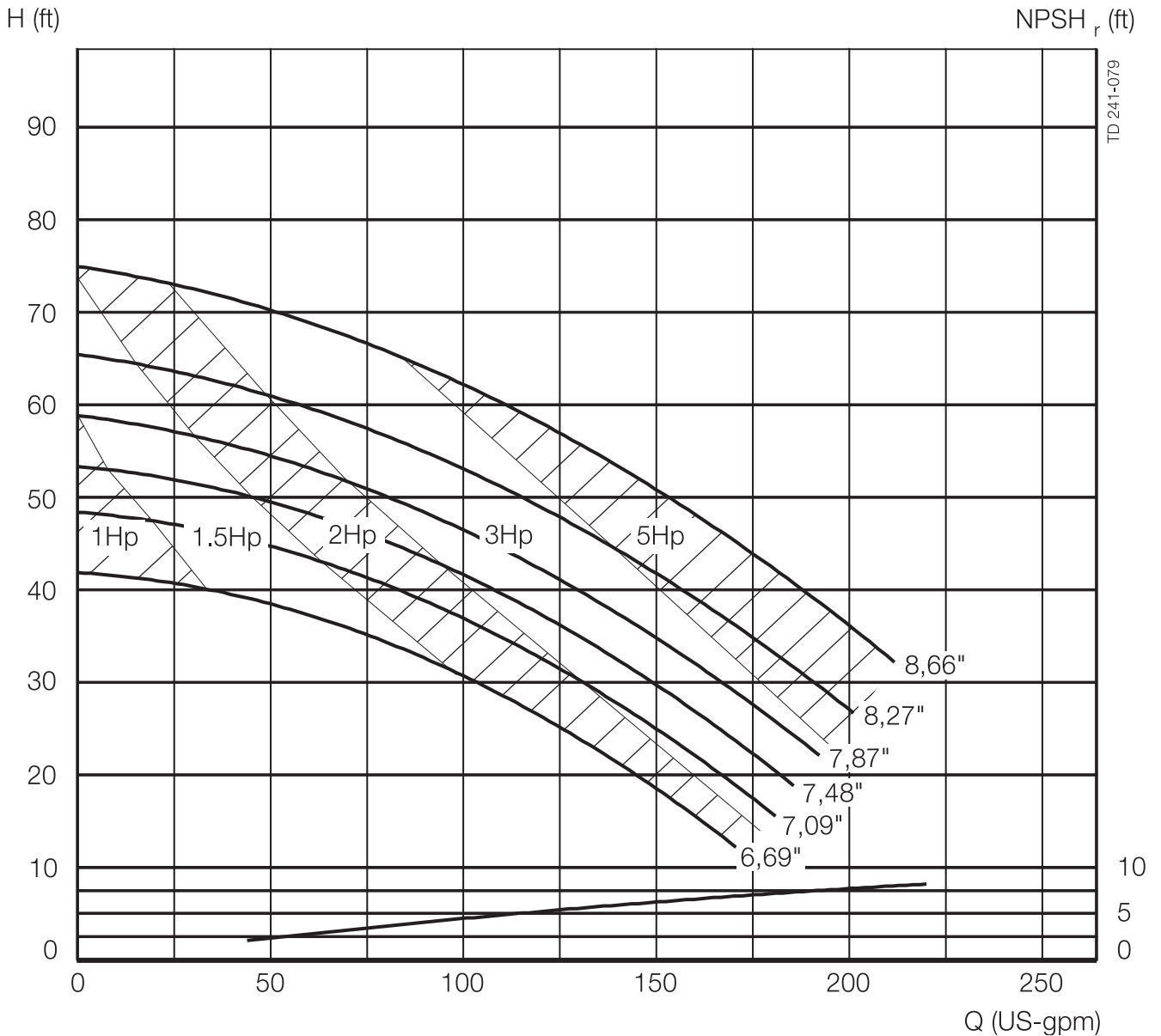
**SolidC-3 Centrifugal Pumps - 60 Hz US**

VM66390 US1 2003-06

Motor: **1800 rpm. synchr.**  
 Tolerance:  $\pm 10\%$   
 Impeller, Max. dia.: 8.66"  
 Impeller, Min. dia.: 6.69"  
 Pump inlet, Dia.: 3"  
 Pump outlet, Dia.: 1½"

Performance data refer to water at 68°F.

NOTE! The curves refer to motor: 8.4 Hp (3.6 kW), 1720 rpm. asynchr., 60 Hz.





**800-648-3326**  
**www.omdean.com**

**Performance Curves**

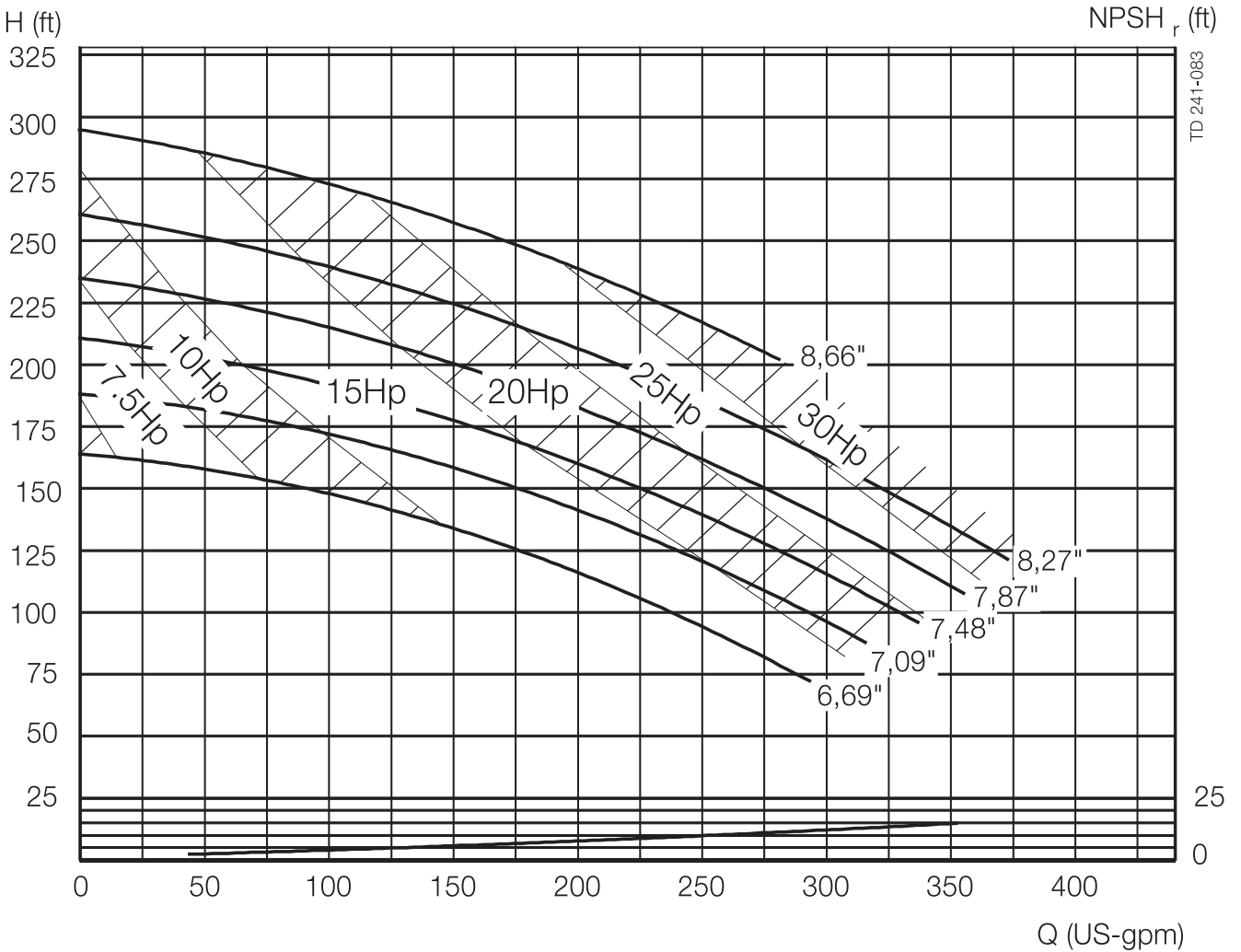
**SolidC-3 Centrifugal Pumps - 60 Hz US**

VM66390 US1 2003-06

Motor: **3600 rpm. synchron.**  
 Tolerance:  $\pm 10\%$   
 Impeller, Max. dia.: 8.66"  
 Impeller, Min. dia.: 6.69"  
 Pump inlet, Dia.: 3"  
 Pump outlet, Dia.: 1½"

Performance data refer to water at 68°F.

NOTE! The curves refer to motor: 33.5 Hp (25 kW), 3555 rpm. asynchr., 60 Hz.



TD 241-083





**Performance Curves**

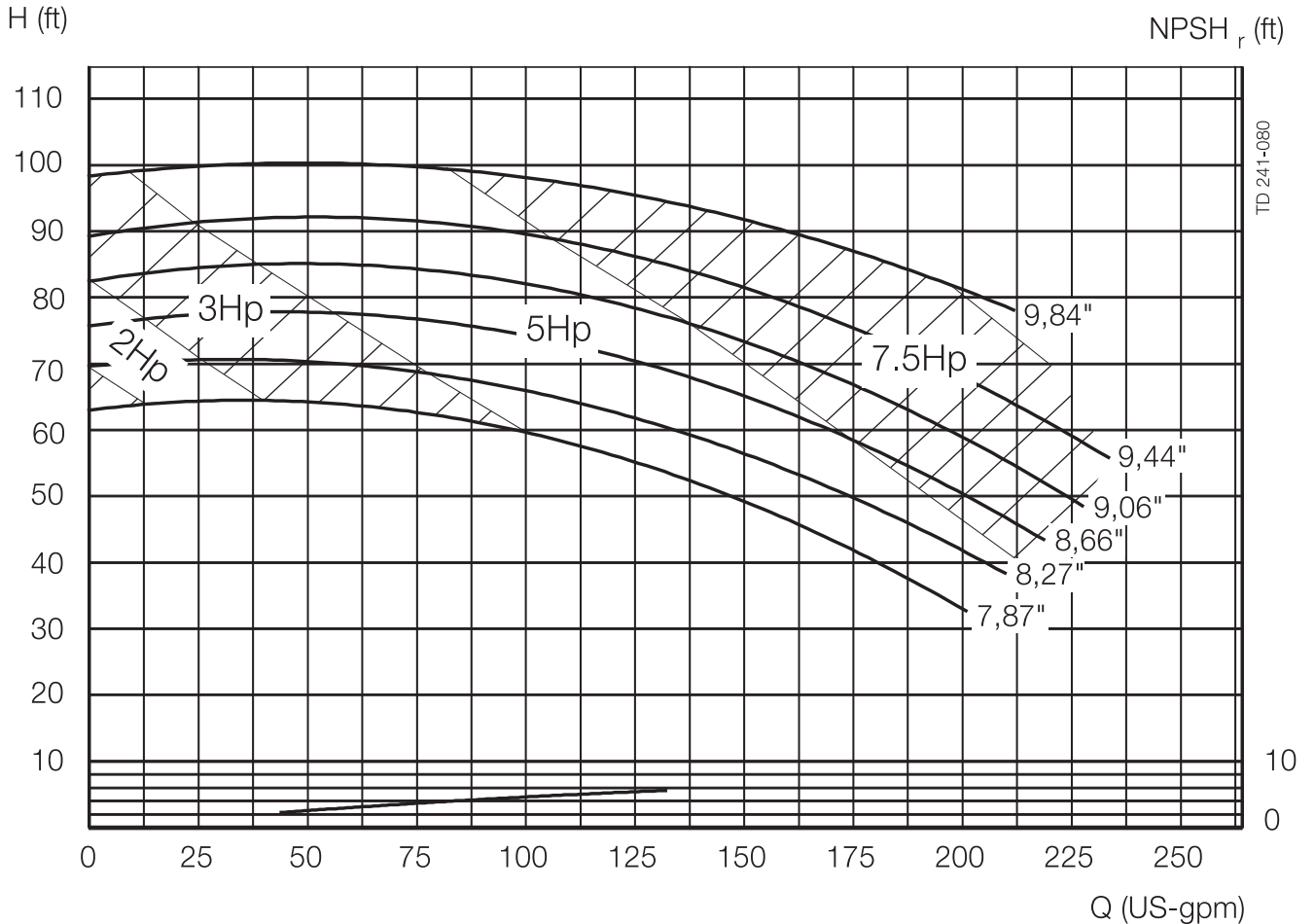
**SolidC-4 Centrifugal Pumps - 60 Hz US**

VM66390 US1 2003-06

Motor: **1800 rpm. synchr.**  
 Tolerance:  $\pm 10\%$   
 Impeller, Max. dia.: 9.84"  
 Impeller, Min. dia.: 7.87"  
 Pump inlet, Dia.: 3"  
 Pump outlet, Dia.: 2"

Performance data refer to water at 68°F.

NOTE! The curves refer to motor: 9.1 Hp (6.8 kW), 1770 rpm. asynchr., 60 Hz.





800-648-3326  
www.omdean.com

### Performance Curves

#### SolidC-4 Centrifugal Pumps - 60 Hz US

VM66390 US1 2003-06

Motor: **3600 rpm. synchron.**  
Tolerance:  $\pm 10\%$   
Impeller, Max. dia.: 9.84"  
Impeller, Min. dia.: 7.87"  
Pump inlet, Dia.: 3"  
Pump outlet, Dia.: 2"

Performance data refer to water at 68°F.

NOTE! The curves refer to motor: 33.5 Hp (25 kW), 3555 rpm. asynchr., 60 Hz.

